

OSGIN1 antibody

Cat. No. GTX03681

Host	Rabbit
Clonality	Polyclonal
Isotype	IgG
Applications	WB, IHC-P
Reactivity	Human, Mouse, Rat

Package
100 µl

Applications

Application Note

*Optimal dilutions/concentrations should be determined by the researcher.

Suggested dilution	Recommended dilution
WB	1:500-1:2000
IHC-P	1:100-1:500

Not tested in other applications.

Observed MW (kDa) 61 kDa.

Properties

Form	Liquid
Buffer	10mM TBS, 1% BSA, 50% Glycerol
Preservative	0.03% Proclin300
Storage	Store as concentrated solution. Centrifuge briefly prior to opening vial. For short-term storage (1-2 weeks), store at 4°C. For long-term storage, aliquot and store at -20°C or below. Avoid multiple freeze-thaw cycles.
Concentration	1 mg/ml (Please refer to the vial label for the specific concentration.)
Immunogen	KLH conjugated synthetic peptide derived from human OSGIN1 (Q9UJX0, 351-450).
Purification	Protein A purified
Conjugation	Unconjugated

Note

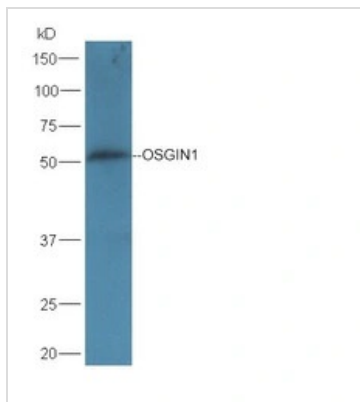
For laboratory research use only. Not for any clinical, therapeutic, or diagnostic use in humans or animals. Not for animal or human consumption.

Purchasers shall not, and agree not to enable third parties to, analyze, copy, reverse engineer or otherwise attempt to determine the structure or sequence of the product.



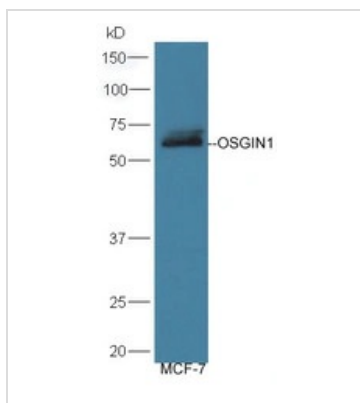
For full product information, images and publications, please visit our [website](#).

DATA IMAGES


GTX03681 WB Image

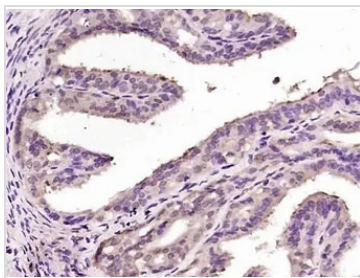
WB analysis of mouse liver tissue lysates using GTX03681 OSGIN1 antibody.

Dilution : 1:300


GTX03681 WB Image

WB analysis of MCF-7 cell lysates using GTX03681 OSGIN1 antibody.

Dilution : 1:300


GTX03681 IHC-P Image

IHC-P analysis of rat fallopian tube tissue using GTX03681 OSGIN1 antibody.

Dilution : 1:200

Antigen retrieval : Heat mediated sodium citrate buffer (pH6.0)



For full product information, images and publications, please visit our [website](https://www.genetex.com).