

## Prothrombin antibody

**Cat. No. GTX03694**

<b>Host</b>	Rabbit
<b>Clonality</b>	Polyclonal
<b>Isotype</b>	IgG
<b>Applications</b>	WB, ICC/IF, IHC-P, IHC-Fr, FCM, ELISA
<b>Reactivity</b>	Human

**Package**  
100 µg

## Applications

**Application Note**

\*Optimal dilutions/concentrations should be determined by the researcher.

Suggested dilution	Recommended dilution
WB	0.1-0.5µg/ml
ICC/IF	0.5-1µg/ml
IHC-P	0.5-1µg/ml
IHC-Fr	0.5-1µg/ml
FCM	1-3µg/1x10 <sup>6</sup> cells
ELISA	0.1-0.5µg/ml

Not tested in other applications.

**Calculated MW** 70 kDa. ( [Note](#) )

## Properties

<b>Form</b>	Liquid
<b>Buffer</b>	4mg Trehalose, 0.9mg NaCl, 0.2mg Na <sub>2</sub> HPO <sub>4</sub>
<b>Preservative</b>	0.05mg sodium azide
<b>Storage</b>	Store as concentrated solution. Centrifuge briefly prior to opening vial. For short-term storage (1-2 weeks), store at 4°C. For long-term storage, aliquot and store at -20°C or below. Avoid multiple freeze-thaw cycles.
<b>Concentration</b>	0.5 mg/ml (Please refer to the vial label for the specific concentration.)
<b>Immunogen</b>	E. coli-derived human Prothrombin recombinant protein (Position: Y67-R124).
<b>Purification</b>	Purified by antigen-affinity chromatography
<b>Conjugation</b>	Unconjugated



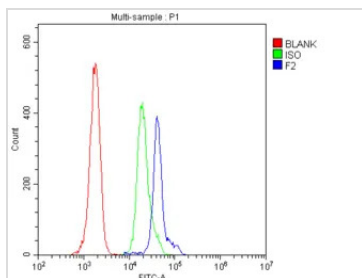
For full product information, images and publications, please visit our [website](#).

For laboratory research use only. Not for any clinical, therapeutic, or diagnostic use in humans or animals. Not for animal or human consumption.

#### Note

Purchasers shall not, and agree not to enable third parties to, analyze, copy, reverse engineer or otherwise attempt to determine the structure or sequence of the product.

#### DATA IMAGES



#### GTX03694 FCM Image

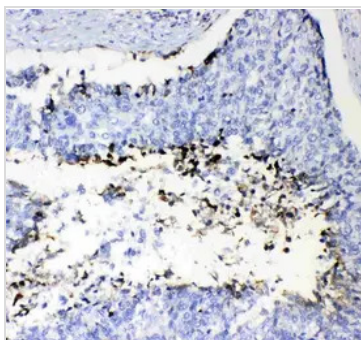
FACS analysis of human PBMC cells using GTX03694 Prothrombin antibody.

Blue : Primary antibody

Green : Isotype control

Red : Unlabelled sample

Antibody amount : 1  $\mu\text{g}/1 \times 10^6$  cells

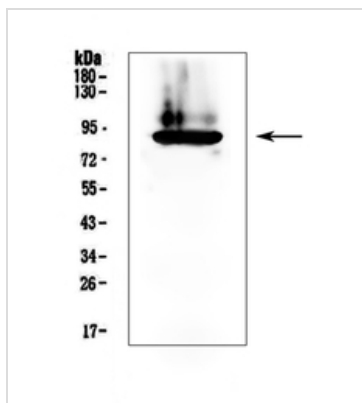


#### GTX03694 IHC-P Image

IHC-P analysis of human lung cancer tissue using GTX03694 Prothrombin antibody.

Dilution : 1  $\mu\text{g}/\text{ml}$

Antigen retrieval : Heat mediated antigen retrieval was performed in citrate buffer (pH6, epitope retrieval solution) for 20 mins



#### GTX03694 WB Image

WB analysis of human plasma lysate using GTX03694 Prothrombin antibody.

Dilution : 0.5  $\mu\text{g}/\text{ml}$

Loading: 50  $\mu\text{g}$  per lane



For full product information, images and publications, please visit our [website](#).