

# SGK1 antibody

**Cat. No. GTX03696**

<b>Host</b>	Rabbit
<b>Clonality</b>	Polyclonal
<b>Isotype</b>	IgG
<b>Application</b>	WB, ICC/IF, IHC-P, FACS
<b>Reactivity</b>	Human, Monkey

**Package**  
100 µg

## APPLICATION

### Application Note

\*Optimal dilutions/concentrations should be determined by the researcher.

Suggested dilution	Recommended dilution
WB	0.25-0.5µg/ml
ICC/IF	2µg/ml
IHC-P	0.5-1µg/ml
FACS	1-3µg/1x10 <sup>6</sup> cells

Not tested in other applications.

**Calculated MW** 49 kDa. ( [Note](#) )

## PROPERTIES

<b>Form</b>	Liquid
<b>Buffer</b>	4mg Trehalose, 0.9mg NaCl, 0.2mg Na <sub>2</sub> HPO <sub>4</sub>
<b>Preservative</b>	0.05mg sodium azide
<b>Storage</b>	Store as concentrated solution. Centrifuge briefly prior to opening vial. For short-term storage (1-2 weeks), store at 4°C. For long-term storage, aliquot and store at -20°C or below. Avoid multiple freeze-thaw cycles.
<b>Concentration</b>	0.5 mg/ml (Please refer to the vial label for the specific concentration.)
<b>Immunogen</b>	A synthetic peptide corresponding to a sequence of human SGK1 (AIIAFMKQRRMGLNDFIQKIAN).
<b>Purification</b>	Purified by antigen-affinity chromatography
<b>Conjugation</b>	Unconjugated

### Note

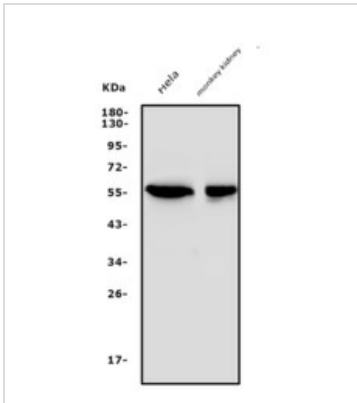
For laboratory research use only. Not for any clinical, therapeutic, or diagnostic use in humans or animals. Not for animal or human consumption.

Purchasers shall not, and agree not to enable third parties to, analyze, copy, reverse engineer or otherwise attempt to determine the structure or sequence of the product.



For full product information, images and publications, please visit our [website](#).

## DATA IMAGES

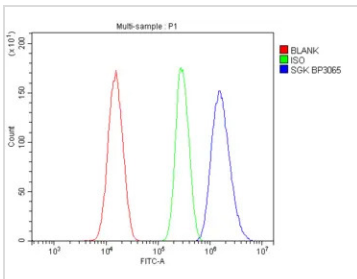


### GTX03696 WB Image

WB analysis of various cell lysates using GTX03696 SGK1 antibody.

Dilution : 0.5 µg/mL

Loading : 50 µg per lane



### GTX03696 FACS Image

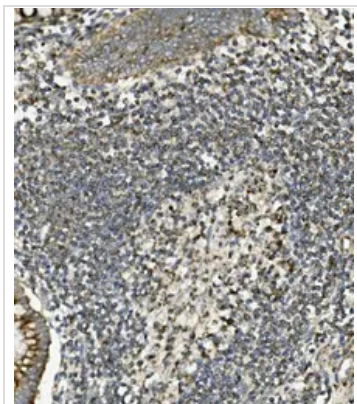
FACS analysis of SiHa cells using GTX03696 SGK1 antibody.

Blue : Primary antibody

Green : Isotype control

Red : Unlabelled sample

Antibody amount : 1 µg/1x10<sup>6</sup> cells

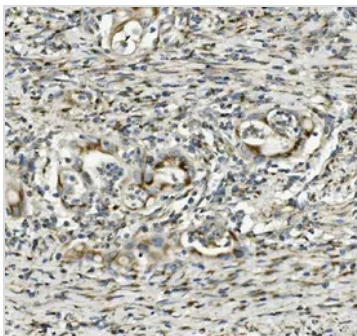


### GTX03696 IHC-P Image

IHC-P analysis of human rectal cancer tissue using GTX03696 SGK1 antibody.

Dilution : 1 µg/ml

Antigen retrieval : Heat mediated antigen retrieval was performed in EDTA buffer (pH8.0, epitope retrieval solution)



### GTX03696 IHC-P Image

IHC-P analysis of human rectal cancer tissue using GTX03696 SGK1 antibody.

Dilution : 1 µg/ml

Antigen retrieval : Heat mediated antigen retrieval was performed in EDTA buffer (pH8.0, epitope retrieval solution)



For full product information, images and publications, please visit our [website](https://www.genetex.com).