

SIRT3 antibody

Cat. No. GTX03711

Host	Rabbit
Clonality	Polyclonal
Isotype	IgG
Applications	WB, IHC-P, IP, IHC
Reactivity	Human, Mouse

Package
400 µl

Applications

Application Note

*Optimal dilutions/concentrations should be determined by the researcher.

Suggested dilution	Recommended dilution
WB	1:1000
IHC-P	1:50-100
IP	Assay dependent
IHC	Assay dependent

Not tested in other applications.

Calculated MW 44 kDa. ([Note](#))

Properties

Form	Liquid
Buffer	PBS
Preservative	0.09% sodium azide
Storage	Store as concentrated solution. Centrifuge briefly prior to opening vial. For short-term storage (1-2 weeks), store at 4°C. For long-term storage, aliquot and store at -20°C or below. Avoid multiple freeze-thaw cycles.
Concentration	Batch dependent (Please refer to the vial label for the specific concentration.)
Immunogen	KLH conjugated synthetic peptide between 250-279 amino acids from the C-terminal region of human SIRT3.
Purification	Protein A purified followed by antigen-affinity chromatography
Conjugation	Unconjugated

Note

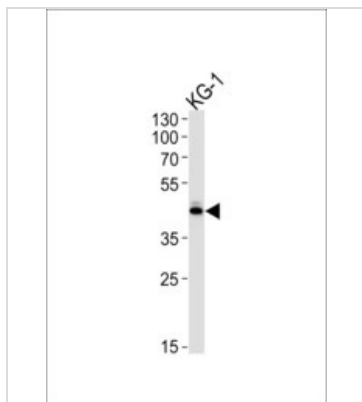
For laboratory research use only. Not for any clinical, therapeutic, or diagnostic use in humans or animals. Not for animal or human consumption.

Purchasers shall not, and agree not to enable third parties to, analyze, copy, reverse engineer or otherwise attempt to determine the structure or sequence of the product.



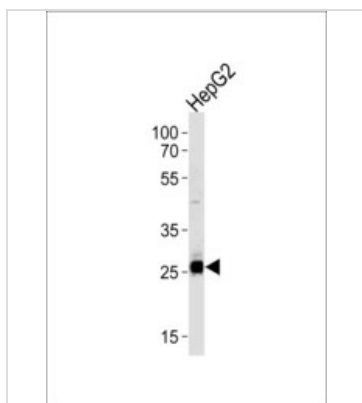
For full product information, images and publications, please visit our [website](#).

DATA IMAGES



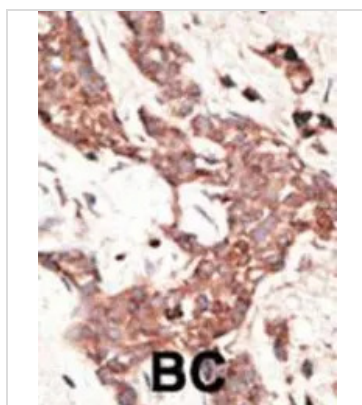
GTX03711 WB Image

WB analysis of KG-1 cell line lysates (35ug/lane) using GTX03711 SIRT3 antibody.



GTX03711 WB Image

WB analysis of HepG2 cell line lysates (35ug/lane) using GTX03711 SIRT3 antibody.



GTX03711 IHC-P Image

IHC-P analysis of human breast cancer tissue using GTX03711 SIRT3 antibody.



For full product information, images and publications, please visit our [website](https://www.genetex.com).