

Claudin 3 antibody

Cat. No. GTX03712

Host	Rabbit
Clonality	Polyclonal
Isotype	IgG
Applications	WB, ICC/IF, IHC-P, FCM, ELISA
Reactivity	Human

Package
100 µg

Applications

Application Note

*Optimal dilutions/concentrations should be determined by the researcher.

Suggested dilution	Recommended dilution
WB	0.1-0.25µg/ml
ICC/IF	5µg/ml
IHC-P	2-5µg/ml
FCM	1-3µg/1x10 ⁶ cells
ELISA	0.1-0.5µg/ml

Not tested in other applications.

Calculated MW 23 kDa. ([Note](#))

Properties

Form	Liquid
Buffer	4mg Trehalose, 0.9mg NaCl, 0.2mg Na ₂ HPO ₄
Preservative	No preservatives
Storage	Store as concentrated solution. Centrifuge briefly prior to opening vial. For short-term storage (1-2 weeks), store at 4°C. For long-term storage, aliquot and store at -20°C or below. Avoid multiple freeze-thaw cycles.
Concentration	0.5 mg/ml (Please refer to the vial label for the specific concentration.)
Immunogen	E.coli-derived human Claudin 3/CLDN3 recombinant protein (Position: A101-V220).
Purification	Purified by antigen-affinity chromatography
Conjugation	Unconjugated



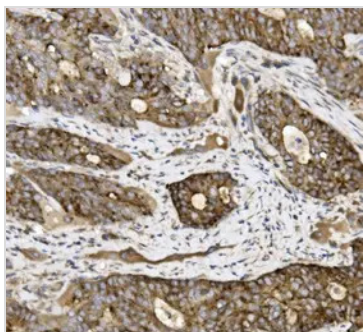
For full product information, images and publications, please visit our [website](#).

For laboratory research use only. Not for any clinical, therapeutic, or diagnostic use in humans or animals. Not for animal or human consumption.

Note

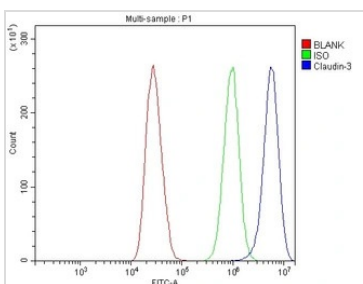
Purchasers shall not, and agree not to enable third parties to, analyze, copy, reverse engineer or otherwise attempt to determine the structure or sequence of the product.

DATA IMAGES



GTX03712 IHC-P Image

IHC-P analysis of human gallbladder adenocarcinoma tissue using GTX03712 Claudin 3 antibody.
 Antigen retrieval : Heat mediated antigen retrieval was performed in EDTA buffer (pH8.0, epitope retrieval solution)
 Dilution : 2µg/ml



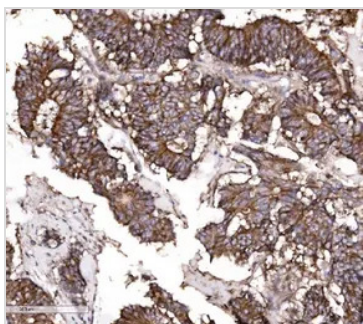
GTX03712 FCM Image

FACS analysis of MCF-7 cells using GTX03712 Claudin 3 antibody.
 Blue : Primary antibody
 Green : Isotype control
 Red : Unlabelled sample
 Antibody amount : 1µg/1x10⁶ cells



GTX03712 IHC-P Image

IHC-P analysis of human liver cancer tissue using GTX03712 Claudin 3 antibody.
 Antigen retrieval : Heat mediated antigen retrieval was performed in EDTA buffer (pH8.0, epitope retrieval solution)
 Dilution : 2µg/ml



GTX03712 IHC-P Image

IHC-P analysis of human colonic adenocarcinoma tissue using GTX03712 Claudin 3 antibody.
 Antigen retrieval : Heat mediated antigen retrieval was performed in EDTA buffer (pH8.0, epitope retrieval solution)
 Dilution : 2µg/ml



For full product information, images and publications, please visit our [website](#).