

TIMP1 antibody

Cat. No. GTX03714

Host	Rabbit
Clonality	Polyclonal
Isotype	IgG
Applications	WB, IHC-P
Reactivity	Human, Mouse, Rat, Rabbit

Package
100 µl

Applications

Application Note

*Optimal dilutions/concentrations should be determined by the researcher.

Suggested dilution	Recommended dilution
WB	1:500-1:2000
IHC-P	1:100-1:500

Not tested in other applications.

Calculated MW 23 kDa. ([Note](#))

Properties

Form	Liquid
Buffer	10mM TBS, 1% BSA, 50% Glycerol
Preservative	0.03% Proclin300
Storage	Store as concentrated solution. Centrifuge briefly prior to opening vial. For short-term storage (1-2 weeks), store at 4°C. For long-term storage, aliquot and store at -20°C or below. Avoid multiple freeze-thaw cycles.
Concentration	1 mg/ml (Please refer to the vial label for the specific concentration.)
Immunogen	KLH conjugated synthetic peptide derived from human TIMP-1 (103-207).
Purification	Protein A purified
Conjugation	Unconjugated

Note

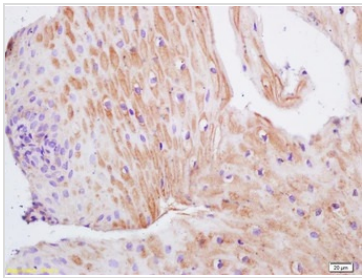
For laboratory research use only. Not for any clinical, therapeutic, or diagnostic use in humans or animals. Not for animal or human consumption.

Purchasers shall not, and agree not to enable third parties to, analyze, copy, reverse engineer or otherwise attempt to determine the structure or sequence of the product.



For full product information, images and publications, please visit our [website](#).

DATA IMAGES

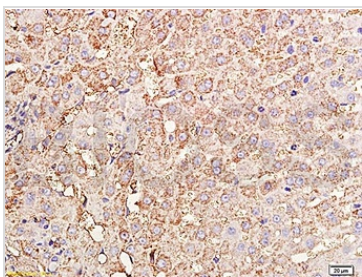


GTx03714 IHC-P Image

IHC-P analysis of 4% PFA-fixed human gastric carcinoma tissue using GTx03714 TIMP1 antibody.

Antigen retrieval : Citrate buffer (0.01M, pH 6.0) boiling for 15min

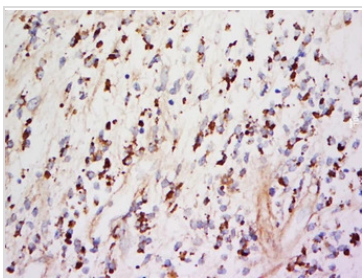
Dilution : 1:200



GTx03714 IHC-P Image

IHC-P analysis of rabbit liver tissue using GTx03714 TIMP1 antibody.

Dilution : 1:200

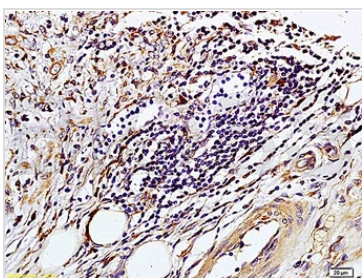


GTx03714 IHC-P Image

IHC-P analysis of human neurilemmoma tissue using GTx03714 TIMP1 antibody.

Antigen retrieval : sodium citrate buffer (pH 6.0) boiling for 15min

Dilution : 1:500



GTx03714 IHC-P Image

IHC-P analysis of human colon carcinoma tissue using GTx03714 TIMP1 antibody.

Dilution : 1:200



For full product information, images and publications, please visit our [website](https://www.genetex.com).