

Lipocalin-2 antibody

Cat. No. GTX03729

Host	Rabbit
Clonality	Polyclonal
Isotype	IgG
Applications	WB, IHC-P, IHC-Fr, FCM, ELISA
Reactivity	Human, Mouse, Rat

Package
100 µg

Applications

Application Note

*Optimal dilutions/concentrations should be determined by the researcher.

Suggested dilution	Recommended dilution
WB	0.1-0.5µg/ml
IHC-P	0.5-1µg/ml
IHC-Fr	0.5-1µg/ml
FCM	1-3µg/1x10 ⁶ cells
ELISA	1-5µg/ml

Note : Antigen retrieval by heat

Not tested in other applications.

Calculated MW 22 kDa. ([Note](#))

Properties

Form	Liquid
Buffer	5mg BSA, 0.9mg NaCl, 0.2mg Na ₂ HPO ₄
Preservative	0.05mg sodium azide
Storage	Store as concentrated solution. Centrifuge briefly prior to opening vial. For short-term storage (1-2 weeks), store at 4°C. For long-term storage, aliquot and store at -20°C or below. Avoid multiple freeze-thaw cycles.
Concentration	0.5 mg/ml (Please refer to the vial label for the specific concentration.)
Immunogen	E. coli-derived rat Lipocalin 2 recombinant protein (Position: Q21-N198).
Purification	Purified by antigen-affinity chromatography
Conjugation	Unconjugated



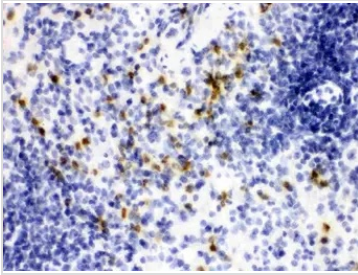
For full product information, images and publications, please visit our [website](#).

For laboratory research use only. Not for any clinical, therapeutic, or diagnostic use in humans or animals. Not for animal or human consumption.

Note

Purchasers shall not, and agree not to enable third parties to, analyze, copy, reverse engineer or otherwise attempt to determine the structure or sequence of the product.

DATA IMAGES

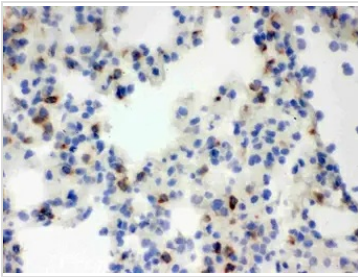


GTX03729 IHC-P Image

IHC-P analysis of mouse spleen tissue using GTX03729 Lipocalin-2 antibody.

Antigen retrieval : Heat mediated antigen retrieval was performed in citrate buffer (pH6, epitope retrieval solution) for 20 mins

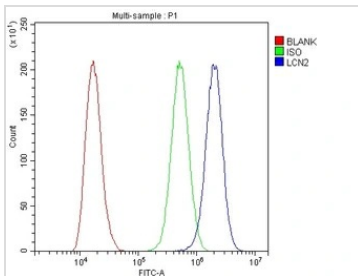
Dilution : 1µg/ml



GTX03729 IHC-Fr Image

IHC-Fr analysis of mouse lung tissue using GTX03729 Lipocalin-2 antibody.

Dilution : 1µg/ml



GTX03729 FCM Image

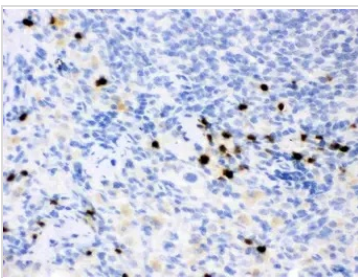
FACS analysis of A431 cells using GTX03729 Lipocalin-2 antibody.

Blue : Primary antibody

Green : Isotype control

Red : Unlabelled sample

Antibody amount : 1µg/1x10⁶ cells



GTX03729 IHC-P Image

IHC-P analysis of rat spleen tissue using GTX03729 Lipocalin-2 antibody.

Antigen retrieval : Heat mediated antigen retrieval was performed in citrate buffer (pH6, epitope retrieval solution) for 20 mins

Dilution : 1µg/ml



For full product information, images and publications, please visit our [website](#).