

SLCO2B1 antibody

Cat. No. GTX03731

Host	Rabbit
Clonality	Polyclonal
Isotype	IgG
Applications	WB, IHC-P, IHC-Fr
Reactivity	Mouse, Rat

Package
100 µl

Applications

Application Note

*Optimal dilutions/concentrations should be determined by the researcher.

Suggested dilution	Recommended dilution
WB	1:500-1:2000
IHC-P	1:100-1:500
IHC-Fr	1:100-1:500

Not tested in other applications.

Calculated MW 77 kDa. ([Note](#))

Properties

Form	Liquid
Buffer	10mM TBS, 1% BSA, 50% Glycerol
Preservative	0.03% Proclin300
Storage	Store as concentrated solution. Centrifuge briefly prior to opening vial. For short-term storage (1-2 weeks), store at 4°C. For long-term storage, aliquot and store at -20°C or below. Avoid multiple freeze-thaw cycles.
Concentration	1 mg/ml (Please refer to the vial label for the specific concentration.)
Immunogen	KLH conjugated synthetic peptide derived from human SLCO2B1.
Purification	Protein A purified
Conjugation	Unconjugated

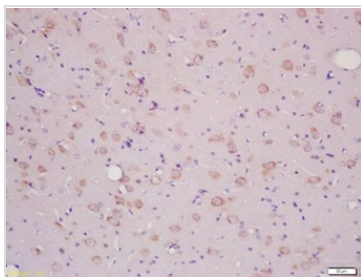
Note

For laboratory research use only. Not for any clinical, therapeutic, or diagnostic use in humans or animals. Not for animal or human consumption.

Purchasers shall not, and agree not to enable third parties to, analyze, copy, reverse engineer or otherwise attempt to determine the structure or sequence of the product.

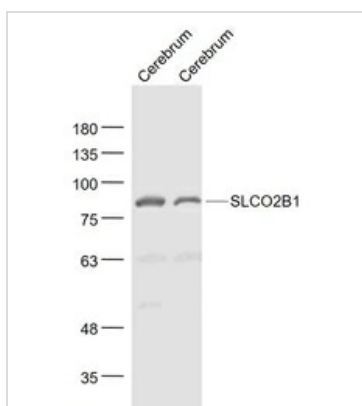


For full product information, images and publications, please visit our [website](#).

DATA IMAGES

GTX03731 IHC-P Image

IHC-P analysis of rat brain tissue using GTX03731 SLCO2B1 antibody.

Dilution : 1:200

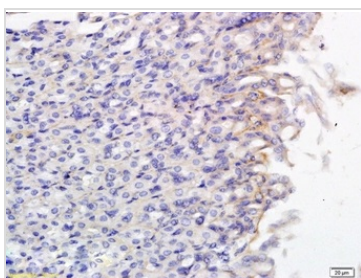

GTX03731 WB Image

WB analysis of various tissue lysates using GTX03731 SLCO2B1 antibody.

Lane 1 : Mouse cerebrum tissue

Lane 2 : Rat cerebrum tissue

Dilution : 1:1000


GTX03731 IHC-P Image

IHC-P analysis of mouse small intestine tissue using GTX03731 SLCO2B1 antibody.



For full product information, images and publications, please visit our [website](https://www.genetex.com).