

# IL18 antibody

**Cat. No. GTX03734**

<b>Host</b>	Rabbit
<b>Clonality</b>	Polyclonal
<b>Isotype</b>	IgG
<b>Applications</b>	WB, IHC-P, FCM, ELISA
<b>Reactivity</b>	Mouse, Rat

**Package**  
 100 µg

## Applications

### Application Note

\*Optimal dilutions/concentrations should be determined by the researcher.

Suggested dilution	Recommended dilution
WB	0.25-0.5µg/ml
IHC-P	2-5µg/ml
FCM	1-3µg/1x10 <sup>6</sup> cells
ELISA	0.1-0.5µg/ml

### Note : Antigen retrieval by heat

Not tested in other applications.

**Calculated MW** 22 kDa. ([Note](#))

## Properties

<b>Form</b>	Liquid
<b>Buffer</b>	4mg Trehalose, 0.9mg NaCl, 0.2mg Na <sub>2</sub> HPO <sub>4</sub>
<b>Preservative</b>	0.05mg sodium azide
<b>Storage</b>	Store as concentrated solution. Centrifuge briefly prior to opening vial. For short-term storage (1-2 weeks), store at 4°C. For long-term storage, aliquot and store at -20°C or below. Avoid multiple freeze-thaw cycles.
<b>Concentration</b>	0.5 mg/ml (Please refer to the vial label for the specific concentration.)
<b>Immunogen</b>	E.coli-derived rat IL-18 recombinant protein (Position: H37-S194).
<b>Purification</b>	Purified by antigen-affinity chromatography
<b>Conjugation</b>	Unconjugated



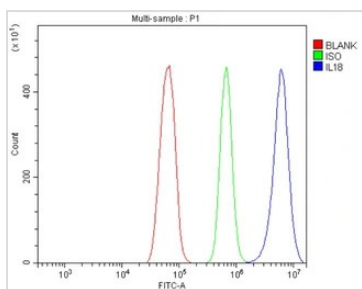
For full product information, images and publications, please visit our [website](#).

For laboratory research use only. Not for any clinical, therapeutic, or diagnostic use in humans or animals. Not for animal or human consumption.

#### Note

Purchasers shall not, and agree not to enable third parties to, analyze, copy, reverse engineer or otherwise attempt to determine the structure or sequence of the product.

#### DATA IMAGES



#### GTX03734 FCM Image

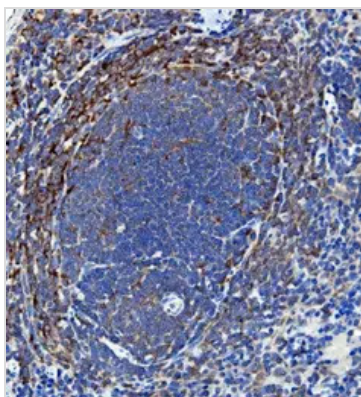
FACS analysis of RH35 cells using GTX03734 IL18 antibody.

Antibody amount : 1  $\mu\text{g}/1 \times 10^6$  cells

Blue : Primary antibody

Green : Isotype control

Red : Unlabelled sample

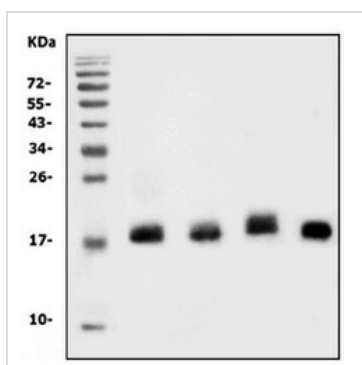


#### GTX03734 IHC-P Image

IHC-P analysis of rat spleen tissue using GTX03734 IL18 antibody.

Antigen retrieval : Heat mediated antigen retrieval was performed in EDTA buffer (pH8.0, epitope retrieval solution)

Dilution : 2  $\mu\text{g}/\text{ml}$



#### GTX03734 WB Image

WB analysis of various lysates using GTX03734 IL18 antibody.

Lane 1 : Mouse spleen

Lane 2 : Mouse thymus

Lane 3 : Mouse lung

Lane 4 : ANA-1 cells

Dilution : 0.5  $\mu\text{g}/\text{ml}$

Loading : 30  $\mu\text{g}$  per lane



For full product information, images and publications, please visit our [website](#).