

BCMA antibody

Cat. No. GTX03735

Host	Rabbit
Clonality	Polyclonal
Isotype	IgG
Applications	WB, ELISA
Reactivity	Mouse, Rat

Package
100 µg

Applications

Application Note

*Optimal dilutions/concentrations should be determined by the researcher.

Suggested dilution	Recommended dilution
WB	0.1-0.5µg/ml
ELISA	1-5µg/ml

Not tested in other applications.

Calculated MW 20 kDa. ([Note](#))

Properties

Form	Liquid
Buffer	4mg Trehalose, 0.9mg NaCl, 0.2mg Na ₂ HPO ₄
Preservative	0.05mg sodium azide
Storage	Store as concentrated solution. Centrifuge briefly prior to opening vial. For short-term storage (1-2 weeks), store at 4°C. For long-term storage, aliquot and store at -20°C or below. Avoid multiple freeze-thaw cycles.
Concentration	0.5 mg/ml (Please refer to the vial label for the specific concentration.)
Immunogen	E. coli-derived mouse BCMA recombinant protein (Position: M1-T49).
Purification	Purified by antigen-affinity chromatography
Conjugation	Unconjugated

Note

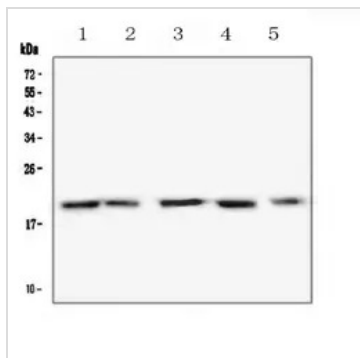
For laboratory research use only. Not for any clinical, therapeutic, or diagnostic use in humans or animals. Not for animal or human consumption.

Purchasers shall not, and agree not to enable third parties to, analyze, copy, reverse engineer or otherwise attempt to determine the structure or sequence of the product.



For full product information, images and publications, please visit our [website](#).

DATA IMAGES



GTX03735 WB Image

WB analysis various lysates using GTX03735 BCMA antibody.

Lane 1 : Mouse spleen

Lane 2 : Mouse thymus

Lane 3: Mouse lung

Lane 4 : Mouse testis

Lane 5: NIH-3T3 cells

Dilution : 0.5 µg/ml

Loading : 50 µg per lane



For full product information, images and publications, please visit our [website](https://www.genetex.com).