

Citrulline antibody [6C2.1]

Cat. No. GTX03742

Host	Mouse
Clonality	Monoclonal
Isotype	IgG1
Applications	WB, ICC/IF, IHC-P, ELISA
Reactivity	Species independent

Package
100 µg

Applications

Application Note

*Optimal dilutions/concentrations should be determined by the researcher.

Suggested dilution	Recommended dilution
WB	1:1000
ICC/IF	1:50
IHC-P	1:25
ELISA	1:1000

Not tested in other applications.

Product Note Specific for citrulline residues on modified proteins. Tested using citrulline conjugated Bovine Serum Albumin (BSA).

Properties

Form	Liquid
Buffer	PBS, 50% glycerol
Preservative	0.09% sodium azide
Storage	Store as concentrated solution. Centrifuge briefly prior to opening vial. For short-term storage (1-2 weeks), store at 4°C. For long-term storage, aliquot and store at -20°C or below. Avoid multiple freeze-thaw cycles.
Concentration	1 mg/ml (Please refer to the vial label for the specific concentration.)
Immunogen	Synthetic L-Citrulline conjugated to Keyhole Limpet Hemocyanin (KLH).
Purification	Protein G purified
Conjugation	Unconjugated

Note

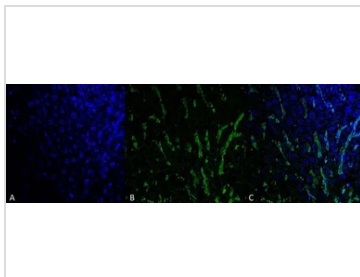
For laboratory research use only. Not for any clinical, therapeutic, or diagnostic use in humans or animals. Not for animal or human consumption.

Purchasers shall not, and agree not to enable third parties to, analyze, copy, reverse engineer or otherwise attempt to determine the structure or sequence of the product.



For full product information, images and publications, please visit our [website](#).

DATA IMAGES



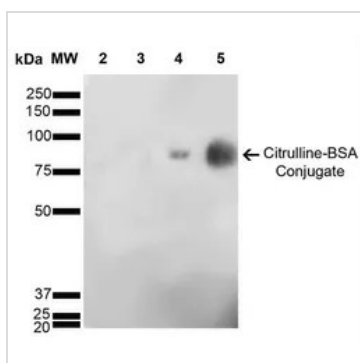
GTX03742 IHC-P Image

IHC-P analysis of mouse colon tissue using GTX03742 Citrulline antibody [6C2.1].

Green : Primary antibody

Blue : DAPI

Dilution : 1:25



GTX03742 WB Image

WB analysis of Citrulline-BSA Conjugate using GTX03742 Citrulline antibody [6C2.1].

Lane 1 : Molecular Weight Ladder (MW)

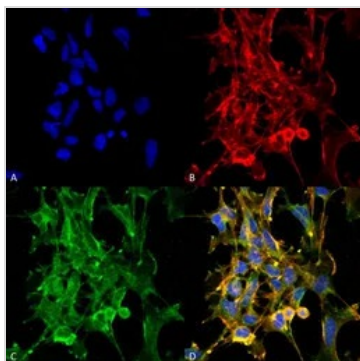
Lane 2 : BSA (0.5 µg)

Lane 3 : BSA (2.0 µg)

Lane 4 : Citrulline-BSA (0.5 µg)

Lane 5 : Citrulline-BSA (2.0 µg)

Dilution : 1:1000



GTX03742 ICC/IF Image

ICC/IF analysis of 5% formaldehyde-fixed HEK293 cells using GTX03742 Citrulline antibody [6C2.1].

Green : Primary antibody

Red : F-actin

Blue : DAPI

Dilution : 1:50



For full product information, images and publications, please visit our [website](https://www.genetex.com).