

MAP4K3 antibody

Cat. No. GTX03745

Host	Rabbit
Clonality	Polyclonal
Isotype	IgG
Applications	WB, ICC/IF, IHC-P
Reactivity	Human, Mouse, Rat

Package
100 µl

Applications

Application Note

*Optimal dilutions/concentrations should be determined by the researcher.

Suggested dilution	Recommended dilution
WB	1:500-1:1000
ICC/IF	1:100-1:500
IHC-P	1:50-1:200

Not tested in other applications.

Calculated MW 101 kDa. ([Note](#))

Properties

Form	Liquid
Buffer	PBS, 150mM NaCl, 50% Glycerol
Preservative	0.02% sodium azide
Storage	Store as concentrated solution. Centrifuge briefly prior to opening vial. For short-term storage (1-2 weeks), store at 4°C. For long-term storage, aliquot and store at -20°C or below. Avoid multiple freeze-thaw cycles.
Concentration	1 mg/ml (Please refer to the vial label for the specific concentration.)
Immunogen	A synthesized peptide derived from human MAP4K3(Accession Q8IVH8), corresponding to amino acid residues M1-Q20.
Purification	Purified by antigen-affinity chromatography From serum
Conjugation	Unconjugated

Note

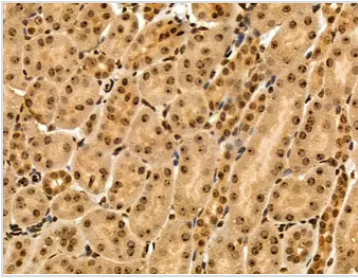
For laboratory research use only. Not for any clinical, therapeutic, or diagnostic use in humans or animals. Not for animal or human consumption.

Purchasers shall not, and agree not to enable third parties to, analyze, copy, reverse engineer or otherwise attempt to determine the structure or sequence of the product.



For full product information, images and publications, please visit our [website](#).

DATA IMAGES

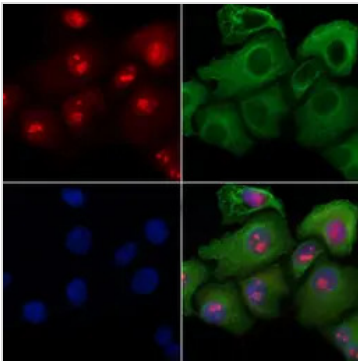


GTx03745 IHC-P Image

IHC-P analysis mouse kidney tissue using GTx03745 MAP4K3 antibody.

Antigen retrieval : Heat mediated citrate buffer

Dilution : 1:100



GTx03745 ICC/IF Image

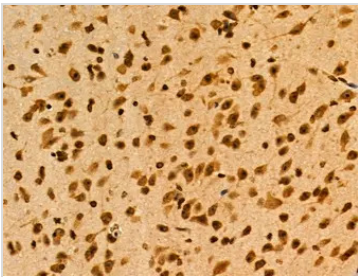
ICC/IF analysis of PFA-fixed HeLa cells using GTx03745 MAP4K3 antibody.

Red : Primary antibody

Green : Beta-tubulin

Blue : DAPI

Permeabilization : 0.1% Triton X-100

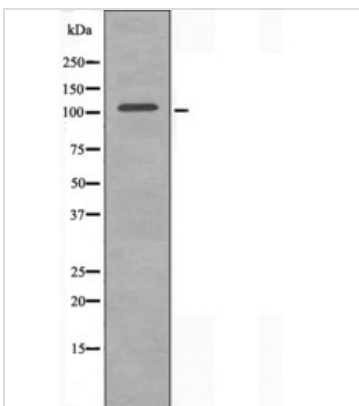


GTx03745 IHC-P Image

IHC-P analysis mouse brain tissue using GTx03745 MAP4K3 antibody.

Antigen retrieval : Heat mediated citrate buffer

Dilution : 1:100



GTx03745 WB Image

WB analysis of HepG2 cell lysates using GTx03745 MAP4K3 antibody.



For full product information, images and publications, please visit our [website](#).