

# Human IgG3 isotype control

**Cat. No. GTX03789**

<b>Host</b>	Human
<b>Clonality</b>	Polyclonal
<b>Isotype</b>	IgG3
<b>Applications</b>	ELISA

**Package**  
500 µg

## Applications

### Application Note

\*Optimal dilutions/concentrations should be determined by the researcher.

Suggested dilution	Recommended dilution
ELISA	$\leq 1\mu\text{g}$

Not tested in other applications.

## Properties

<b>Form</b>	Liquid
<b>Buffer</b>	Borate buffered saline
<b>Preservative</b>	No preservatives
<b>Storage</b>	Store as concentrated solution. Centrifuge briefly prior to opening vial. Store at 4°C.
<b>Concentration</b>	0.5 mg/ml (Please refer to the vial label for the specific concentration.)
<b>Purification</b>	Purified IgG3 From serum
<b>Conjugation</b>	Unconjugated

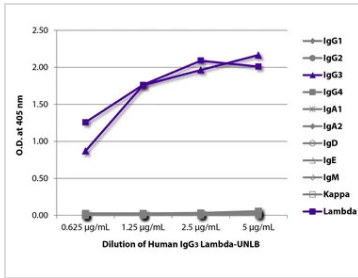
### Note

For laboratory research use only. Not for any clinical, therapeutic, or diagnostic use in humans or animals. Not for animal or human consumption.

Purchasers shall not, and agree not to enable third parties to, analyze, copy, reverse engineer or otherwise attempt to determine the structure or sequence of the product.



For full product information, images and publications, please visit our [website](#).

**DATA IMAGES**

**GTX03789 ELISA Image**

ELISA analysis of serially diluted GTX03789 Human IgG3 isotype control using Mouse Anti-Human IgG1 Hinge, Mouse Anti-Human IgG2 Fc, Mouse Anti-Human IgG3 Hinge, Mouse Anti-Human IgG4 pFc', Mouse Anti-Human IgA1, Mouse Anti-Human IgA2, Mouse Anti-Human IgD, Mouse Anti-Human IgE Fc, Mouse Anti-Human IgM, Mouse Anti-Human Kappa, and Mouse Anti-Human Lambda followed by Streptavidin-HRP and quantified.



For full product information, images and publications, please visit our [website](https://www.genetex.com).