

Human EPO protein (active)

Cat. No. GTX03793-pro

Applications Functional Assay

Species Human

Package

20 µg

PRODUCT

Summary The bio-activity was determined by dose-dependent stimulation of the proliferation of TF-1 cells. The ED50 < 0.2ng/mL, corresponding to a specific activity of >5000000 Unit/mg.

Applications

Observed MW (kDa) 33 kDa.

Properties

Form Lyophilized powder

Buffer Batch dependent (please contact us for details)

Storage Store at -20°C or below. After reconstitution, keep as concentrated solution. Aliquot and store at -20°C or below. Avoid freeze-thaw cycles.

Region/Sequence Ala 28 - Arg 193

Expression System HEK293 cells

Purity >97% by SDS-PAGE

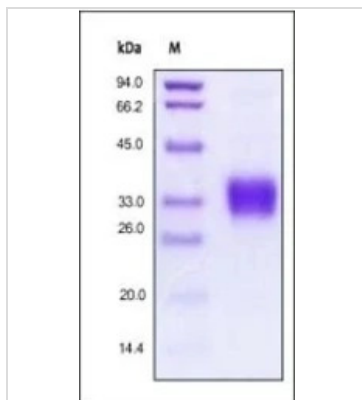
Conjugation Unconjugated

Note For laboratory research use only. Not for any clinical, therapeutic, or diagnostic use in humans or animals. Not for animal or human consumption.

Purchasers shall not, and agree not to enable third parties to, analyze, copy, reverse engineer or otherwise attempt to determine the structure or sequence of the product.



For full product information, images and publications, please visit our [website](#).

DATA IMAGES

GTX03793-pro Image

SDS-PAGE analysis of GTX03793-pro Human EPO protein.



For full product information, images and publications, please visit our [website](https://www.genetex.com).