

PTPD1 antibody

Cat. No. GTX03798

| | |
|--------------|------------|
| Host | Rabbit |
| Clonality | Polyclonal |
| Isotype | IgG |
| Applications | WB, IHC-P |
| Reactivity | Human |

Package
400 µl

Applications

Application Note

*Optimal dilutions/concentrations should be determined by the researcher.

| Suggested dilution | Recommended dilution |
|--------------------|----------------------|
| WB | 1:1000 |
| IHC-P | 1:10-1:50 |

Not tested in other applications.

Calculated MW 133 kDa. ([Note](#))

Properties

| | |
|---------------|--|
| Form | Liquid |
| Buffer | PBS |
| Preservative | 0.09% sodium azide |
| Storage | Store as concentrated solution. Centrifuge briefly prior to opening vial. For short-term storage (1-2 weeks), store at 4°C. For long-term storage, aliquot and store at -20°C or below. Avoid multiple freeze-thaw cycles. |
| Concentration | Batch dependent (Please refer to the vial label for the specific concentration.) |
| Immunogen | This PTPD1 antibody is generated from rabbits immunized with a KLH conjugated synthetic peptide between 751-780 amino acids from the Central region of human PTPD1. |
| Purification | Purified by saturated Ammonium Sulfate (SAS) precipitation followed by dialysis against PBS. |
| Conjugation | Unconjugated |

Note

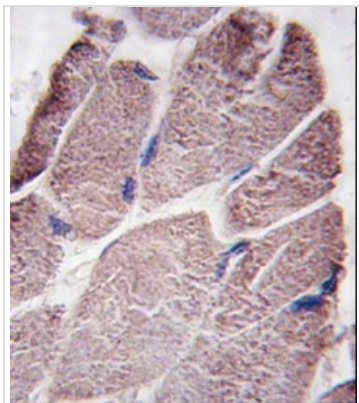
For laboratory research use only. Not for any clinical, therapeutic, or diagnostic use in humans or animals. Not for animal or human consumption.

Purchasers shall not, and agree not to enable third parties to, analyze, copy, reverse engineer or otherwise attempt to determine the structure or sequence of the product.



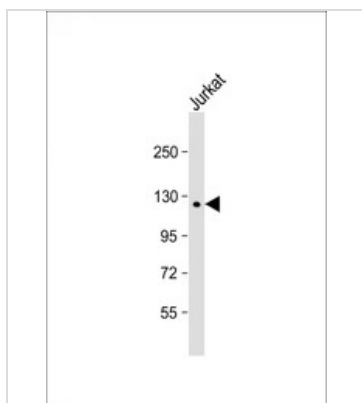
For full product information, images and publications, please visit our [website](#).

DATA IMAGES



GTX03798 IHC-P Image

IHC-P analysis of human skeletal muscle tissue using GTX03798 PTPD1 antibody.



GTX03798 WB Image

WB analysis of Jurkat cell lysates using GTX03798 PTPD1 antibody.

Dilution : 1:1000

Loading : 20µg



For full product information, images and publications, please visit our [website](#).