

Human IgG Fc fragment protein

Cat. No. GTX03802-pro
Species Human

Package
500 µg

PRODUCT
Summary

Human IgG Fc purified protein is a proteolytic fragment of immunoglobulin G (IgG) obtained by limited digestion with the enzyme papain under controlled conditions of temperature, time and pH. Receptors bind the Fc portion of Human IgG and often this fragment is removed from immunoglobulins to minimize receptor binding and lower background reactivity.

Applications
Product Note

Assay by immunoelectrophoresis resulted in a single precipitin arc against anti-Human Serum, anti-Human IgG and anti-Human IgG F(c). No reaction was observed against anti-Human IgG F(ab')₂ or anti-Papain.

Properties
Form Liquid

Buffer 0.02 M Potassium Phosphate, 0.15 M Sodium Chloride pH 7.2,

Preservative 0.01% sodium azide

Storage

Store as concentrated solution. Centrifuge briefly prior to opening vial. Aliquot and store at -20°C or below. Avoid multiple freeze-thaw cycles.

Concentration 1 mg/ml (Please refer to the vial label for the specific concentration.)

Expression System Native protein from normal human serum

Purification

Purified by a multi-step process which includes delipidation, salt fractionation, ion exchange chromatography and papain digestion followed by chromatographic separation and extensive dialysis against the buffer stated above
From serum

Conjugation Unconjugated

Note

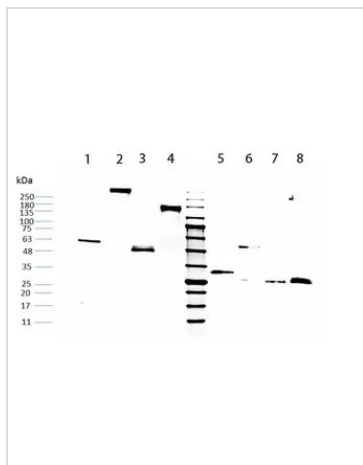
For laboratory research use only. Not for any clinical, therapeutic, or diagnostic use in humans or animals. Not for animal or human consumption.

Purchasers shall not, and agree not to enable third parties to, analyze, copy, reverse engineer or otherwise attempt to determine the structure or sequence of the product.



For full product information, images and publications, please visit our [website](#).

DATA IMAGES



GTX03802-pro Image

SDS-PAGE of GTX03802-pro Human IgG Fc.

Lane 1 : GTX03802-pro (Non-reduced)

Lane 2 : Non-reduced Human IgG Whole Molecule

Lane 3 : Non-reduced Human IgG Fab Fragment

Lane 4 : Non-reduced Human IgG F(ab')₂

Middle Lane : 5µL Pre-stained Marker

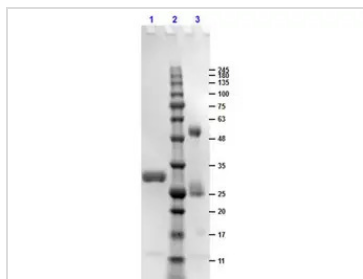
Lane 5 : GTX03802-pro (Reduced)

Lane 6 : Reduced Human IgG Whole Molecule

Lane 7 : Reduced Human IgG Fab Fragment

Lane 8 : Reduced Human IgG F(ab')₂

Loading : 1µg per lane



GTX03802-pro Image

SDS-PAGE of GTX03802-pro Human IgG Fc.

Lane 1 : GTX03802-pro (Reduced)

Lane 2 : Prestained Molecular Weight Ladder

Lane 3 : GTX03802-pro (Non-reduced)



For full product information, images and publications, please visit our [website](#).