

## LONP1 antibody

**Cat. No. GTX03806**

<b>Host</b>	Rabbit
<b>Clonality</b>	Polyclonal
<b>Isotype</b>	IgG
<b>Applications</b>	WB, ICC/IF, IHC-P, FCM, ELISA
<b>Reactivity</b>	Human, Mouse, Rat

**Package**  
100 µg

## Applications

**Application Note**

\*Optimal dilutions/concentrations should be determined by the researcher.

Suggested dilution	Recommended dilution
WB	0.1-0.5µg/mL
ICC/IF	2µg/mL
IHC-P	0.5-1µg/mL
FCM	1-3µg/1x10 <sup>6</sup> cells
ELISA	0.1-0.5µg/mL

Not tested in other applications.

**Calculated MW** 106 kDa. ([Note](#))

## Properties

<b>Form</b>	Liquid
<b>Buffer</b>	4mg Trehalose, 0.9mg NaCl, 0.2mg Na <sub>2</sub> HPO <sub>4</sub>
<b>Preservative</b>	0.05mg sodium azide
<b>Storage</b>	Store as concentrated solution. Centrifuge briefly prior to opening vial. For short-term storage (1-2 weeks), store at 4°C. For long-term storage, aliquot and store at -20°C or below. Avoid multiple freeze-thaw cycles.
<b>Concentration</b>	0.5 mg/ml (Please refer to the vial label for the specific concentration.)
<b>Immunogen</b>	E.coli-derived human LONP1/Lon recombinant protein (Position: R137-A320).
<b>Purification</b>	Purified by antigen-affinity chromatography
<b>Conjugation</b>	Unconjugated



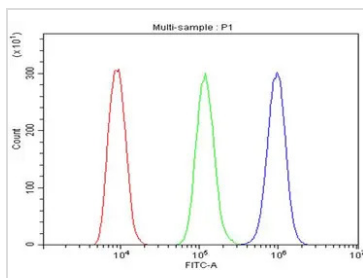
For full product information, images and publications, please visit our [website](#).

For laboratory research use only. Not for any clinical, therapeutic, or diagnostic use in humans or animals. Not for animal or human consumption.

**Note**

Purchasers shall not, and agree not to enable third parties to, analyze, copy, reverse engineer or otherwise attempt to determine the structure or sequence of the product.

DATA IMAGES



**GTX03806 FCM Image**

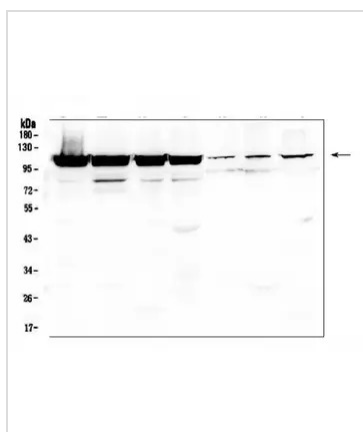
FACS analysis of HL-60 cells using GTX03806 LONP1 antibody.

Antibody amount : 1µg/1x10<sup>6</sup> cells

Blue : Primary antibody

Green : Isotype control

Red : Unlabelled sample



**GTX03806 WB Image**

WB analysis of various sample lysates using GTX03806 LONP1 antibody.

Lane 1 : K562 cells

Lane 2 : U87-MG cells

Lane 3 : PC-3 cells

Lane 4 : A549 cells

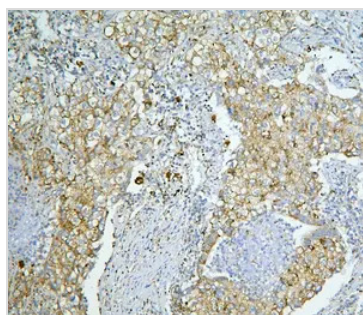
Lane 5 : Mouse liver tissue

Lane 6 : Mouse kidney tissue

Lane 7 : SP20 cells

Dilution : 0.5 µg/mL

Loading : 50 µg per lane



**GTX03806 IHC-P Image**

IHC-P analysis of human lung cancer tissue using GTX03806 LONP1 antibody.

Antigen retrieval : Heat mediated antigen retrieval was performed in citrate buffer (pH6, epitope retrieval solution) for 20 mins

Dilution : 1µg/mL



For full product information, images and publications, please visit our [website](#).