

MLKL antibody

Cat. No. GTX03807

Host	Rabbit
Clonality	Polyclonal
Isotype	IgG
Applications	WB, IHC-P
Reactivity	Human, Mouse

Package
200 µl

Applications

Application Note

*Optimal dilutions/concentrations should be determined by the researcher.

Suggested dilution	Recommended dilution
WB	1:1000
IHC-P	1:400

Not tested in other applications.

Calculated MW 54 kDa. ([Note](#))

Properties

Form	Liquid
Buffer	PBS
Preservative	0.09% sodium azide
Storage	Store as concentrated solution. Centrifuge briefly prior to opening vial. For short-term storage (1-2 weeks), store at 4°C. For long-term storage, aliquot and store at -20°C or below. Avoid multiple freeze-thaw cycles.
Concentration	Batch dependent (Please refer to the vial label for the specific concentration.)
Immunogen	KLH conjugated synthetic peptide between 444-472 amino acids from the C-terminal region of mouse Mlkl.
Purification	Protein A purified followed by antigen-affinity chromatography
Conjugation	Unconjugated

Note

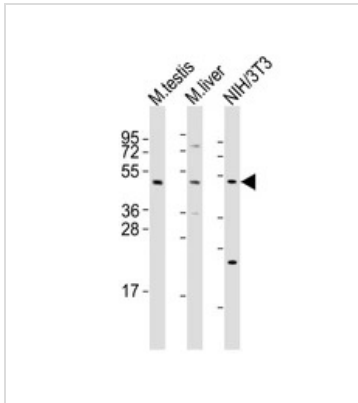
For laboratory research use only. Not for any clinical, therapeutic, or diagnostic use in humans or animals. Not for animal or human consumption.

Purchasers shall not, and agree not to enable third parties to, analyze, copy, reverse engineer or otherwise attempt to determine the structure or sequence of the product.



For full product information, images and publications, please visit our [website](#).

DATA IMAGES



GTx03807 WB Image

WB analysis of various sample lysates using GTx03807 MLKL antibody.

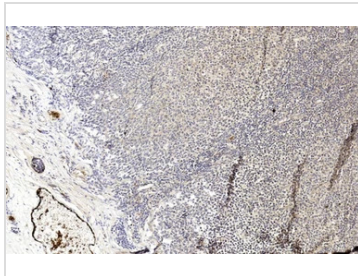
Lane 1 : mouse testis

Lane 2 : mouse liver

Lane3 : NIH-3T3

Dilution : 1:2000

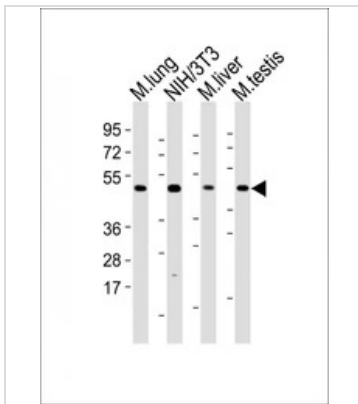
Loading : 20 µg per lane



GTx03807 IHC-P Image

IHC-P analysis of human tonsil tissue section using GTx03807 MLKL antibody.

Dilution : 1:400



GTx03807 WB Image

WB analysis of various sample lysates using GTx03807 MLKL antibody.

Lane 1 : mouse lung

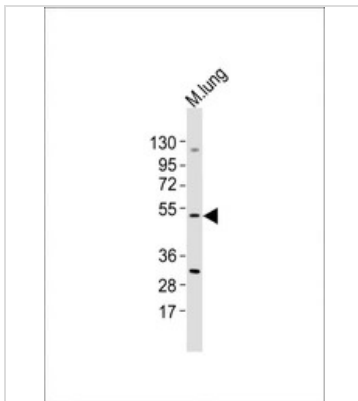
Lane 2 : NIH/3T3

Lane 3 : mouse liver

Lane 4 : mouse testis

Dilution : 1:2000

Loading : 20 µg per lane



GTx03807 WB Image

WB analysis of mouse lung tissue lysates using GTx03807 MLKL antibody

Dilution : 1:1000

Loading : 20 µg per lane



For full product information, images and publications, please visit our [website](http://www.genetex.com).