

5-HT2C receptor antibody

Cat. No. GTX03808

Host	Rabbit
Clonality	Polyclonal
Isotype	IgG
Applications	WB, IHC-P, IP, ELISA
Reactivity	Human, Mouse, Rat, Baboon

Package
100 µg

Applications

Application Note

*Optimal dilutions/concentrations should be determined by the researcher.

Suggested dilution	Recommended dilution
WB	1:500
IHC-P	1:50-1:100
IP	1:200
ELISA	1:50,000

Not tested in other applications.

Calculated MW 52 kDa. ([Note](#))

Properties

Form	Liquid
Buffer	Tris-Glycine, BSA, 30% Glycerol
Preservative	0.02% sodium azide
Storage	Store as concentrated solution. Centrifuge briefly prior to opening vial. For short-term storage (1-2 weeks), store at 4°C. For long-term storage, aliquot and store at -20°C or below. Avoid multiple freeze-thaw cycles.
Concentration	0.5 mg/ml (Please refer to the vial label for the specific concentration.)
Immunogen	Synthetic peptide taken within amino acid region 400-458 on human 5-hydroxytryptamine receptor 2C.
Purification	Purified by antigen-affinity chromatography
Conjugation	Unconjugated

Note

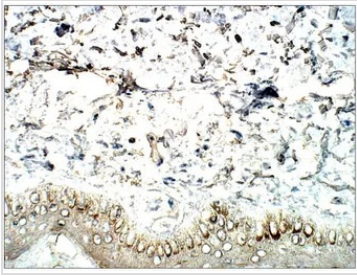
For laboratory research use only. Not for any clinical, therapeutic, or diagnostic use in humans or animals. Not for animal or human consumption.

Purchasers shall not, and agree not to enable third parties to, analyze, copy, reverse engineer or otherwise attempt to determine the structure or sequence of the product.

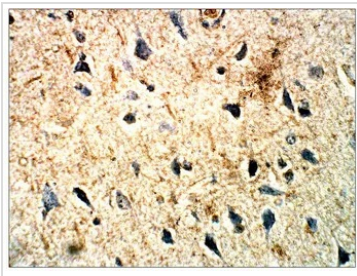


For full product information, images and publications, please visit our [website](#).

DATA IMAGES

**GTX03808 IHC-P Image**

WB analysis of human fibroepithelial polyp tissue using GTX03808 5-HT2C receptor antibody.
Dilution : 1:50

**GTX03808 IHC-P Image**

WB analysis of baboon brain tissue using GTX03808 5-HT2C receptor antibody.
Dilution : 1:50



For full product information, images and publications, please visit our [website](#).