

# CXCL1 / GRO alpha antibody

**Cat. No. GTX03810**

|                     |                   |
|---------------------|-------------------|
| <b>Host</b>         | Rabbit            |
| <b>Clonality</b>    | Polyclonal        |
| <b>Isotype</b>      | IgG               |
| <b>Applications</b> | WB, IHC-P         |
| <b>Reactivity</b>   | Human, Mouse, Rat |

References ( 1 )

Package

100 µl

## Applications

### Application Note

\*Optimal dilutions/concentrations should be determined by the researcher.

| Suggested dilution | Recommended dilution |
|--------------------|----------------------|
| WB                 | 1:500-1:2000         |
| IHC-P              | 1:50-1:200           |

Not tested in other applications.

**Calculated MW** 11 kDa. ( [Note](#) )

## Properties

|                      |  |
|----------------------|--|
| <b>Form</b>          | Liquid   |
| <b>Buffer</b>        | PBS, 150mM NaCl, 50% Glycerol  |
| <b>Preservative</b>  | 0.02% sodium azide   |
| <b>Storage</b>       | Store as concentrated solution. Centrifuge briefly prior to opening vial. For short-term storage (1-2 weeks), store at 4°C. For long-term storage, aliquot and store at -20°C or below. Avoid multiple freeze-thaw cycles. |
| <b>Concentration</b> | 1 mg/ml (Please refer to the vial label for the specific concentration.)   |
| <b>Immunogen</b>     | A synthesized peptide derived from human CXCL1(Accession P09341), corresponding to amino acid residues H68-I92.  |
| <b>Purification</b>  | Purified by antigen-affinity chromatography<br>From serum  |
| <b>Conjugation</b>   | Unconjugated   |

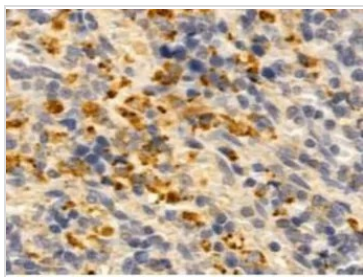
### Note

For laboratory research use only. Not for any clinical, therapeutic, or diagnostic use in humans or animals. Not for animal or human consumption.

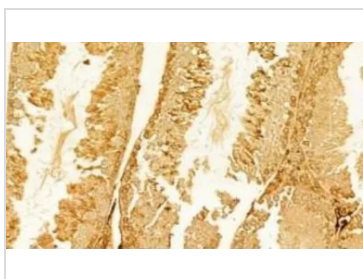
Purchasers shall not, and agree not to enable third parties to, analyze, copy, reverse engineer or otherwise attempt to determine the structure or sequence of the product.



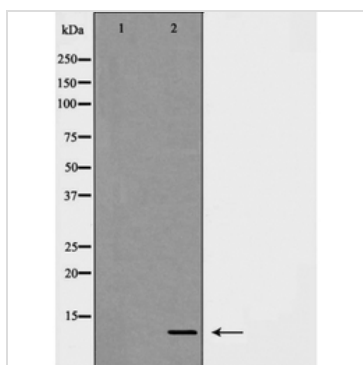
For full product information, images and publications, please visit our [website](#).

**DATA IMAGES**

**GTx03810 IHC-P Image**

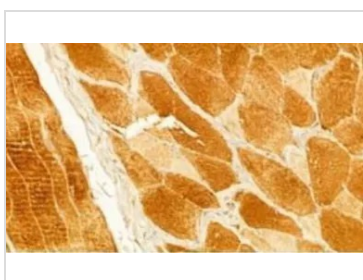
IHC-P analysis of rat spleen tissue using GTx03810 CXCL1 / GRO alpha antibody.  
Antigen retrieval : Heat mediated antigen retrieval step in citrate buffer was performed.  
Dilution : 1:100


**GTx03810 IHC-P Image**

IHC-P analysis of mouse testis tissue using GTx03810 CXCL1 / GRO alpha antibody.  
Antigen retrieval : Heat mediated antigen retrieval step in citrate buffer was performed.  
Dilution : 1:100


**GTx03810 WB Image**

WB analysis of Jurkat cell lysate using GTx03810 CXCL1 / GRO alpha antibody. The lane on the left was treated with the antigen-specific peptide.


**GTx03810 IHC-P Image**

IHC-P analysis of rat skin tissue using GTx03810 CXCL1 / GRO alpha antibody.  
Antigen retrieval : Heat mediated antigen retrieval step in citrate buffer was performed.  
Dilution : 1:100



For full product information, images and publications, please visit our [website](https://www.genetex.com).