

USP2 antibody [1738CT331.50.87]

Cat. No. GTX03924

Host	Mouse
Clonality	Monoclonal
Isotype	IgG1
Applications	WB
Reactivity	Human, Monkey

Package
200 µl

Applications

Application Note

*Optimal dilutions/concentrations should be determined by the researcher.

Suggested dilution

WB

Recommended dilution

1:2000

Not tested in other applications.

Calculated MW 68 kDa. ([Note](#))

Properties

Form Liquid

Buffer PBS

Preservative 0.09% sodium azide

Storage Store as concentrated solution. Centrifuge briefly prior to opening vial. For short-term storage (1-2 weeks), store at 4°C. For long-term storage, aliquot and store at -20°C or below. Avoid multiple freeze-thaw cycles.

Concentration Batch dependent (Please refer to the vial label for the specific concentration.)

Immunogen Recombinant protein between 1-258 amino acids from human USP2.

Purification Protein G purified followed by dialysis against PBS

Conjugation Unconjugated

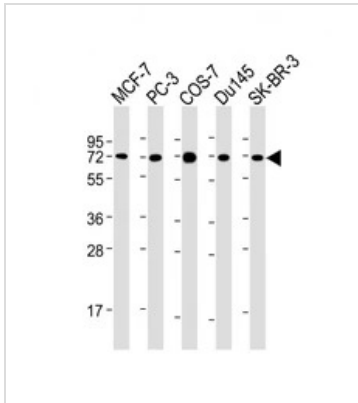
Note

For laboratory research use only. Not for any clinical, therapeutic, or diagnostic use in humans or animals. Not for animal or human consumption.

Purchasers shall not, and agree not to enable third parties to, analyze, copy, reverse engineer or otherwise attempt to determine the structure or sequence of the product.



For full product information, images and publications, please visit our [website](#).

DATA IMAGES

GTX03924 WB Image

WB analysis of various lysates using GTX03924 USP2 antibody [1738CT331.50.87].

Lane 1 : MCF-7

Lane 2 : PC-3

Lane3 : COS-7

Lane 4 : Du145

Lane 5 : SK-BR-3

Dilution : 1:2000

Loading : 20 µg per lane



For full product information, images and publications, please visit our [website](#).