

## Androgen Receptor antibody

Cat. No. GTX03929

<b>Host</b>	Rabbit
<b>Clonality</b>	Polyclonal
<b>Isotype</b>	IgG
<b>Applications</b>	WB, ICC/IF, IHC-P
<b>Reactivity</b>	Human, Mouse, Rat, Goat, Pig

Package  
100 µl

## Applications

## Application Note

\*Optimal dilutions/concentrations should be determined by the researcher.

Suggested dilution	Recommended dilution
WB	1:300-1:5000
ICC/IF	1:50-1:200
IHC-P	1:200-1:400

Not tested in other applications.

**Calculated MW** 99 kDa. ([Note](#))

## Properties

<b>Form</b>	Liquid
<b>Buffer</b>	10mM TBS, 1% BSA, 50% Glycerol
<b>Preservative</b>	0.03% Proclin300
<b>Storage</b>	Store as concentrated solution. Centrifuge briefly prior to opening vial. For short-term storage (1-2 weeks), store at 4°C. For long-term storage, aliquot and store at -20°C or below. Avoid multiple freeze-thaw cycles.
<b>Concentration</b>	1 mg/ml (Please refer to the vial label for the specific concentration.)
<b>Immunogen</b>	KLH conjugated synthetic peptide derived from human AR (825-919).
<b>Purification</b>	Protein A purified
<b>Conjugation</b>	Unconjugated

## Note

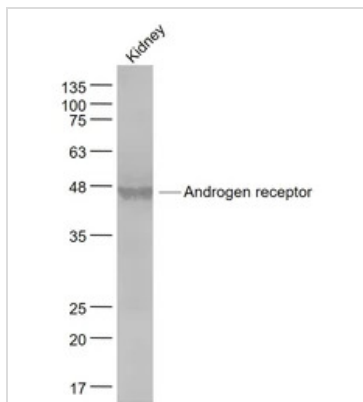
For laboratory research use only. Not for any clinical, therapeutic, or diagnostic use in humans or animals. Not for animal or human consumption.

Purchasers shall not, and agree not to enable third parties to, analyze, copy, reverse engineer or otherwise attempt to determine the structure or sequence of the product.



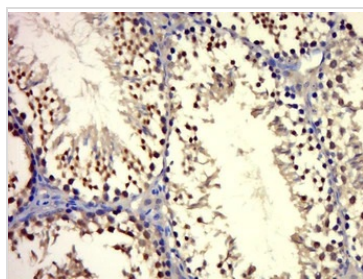
For full product information, images and publications, please visit our [website](#).

DATA IMAGES



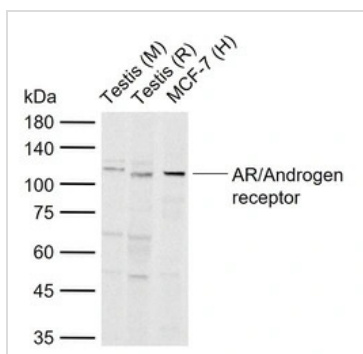
**GTX03929 WB Image**

WB analysis of mouse kidney tissue lysates using GTX03929 Androgen Receptor antibody.  
Dilution : 1:1000



**GTX03929 IHC-P Image**

IHC-P analysis mouse testis tissue using GTX03929 Androgen Receptor antibody.  
Antigen retrieval : Boiled in sodium citrate buffer (pH 6.0) 15 min  
Dilution : 1:500



**GTX03929 WB Image**

WB analysis of various samples using GTX03929 Androgen Receptor antibody.  
Lane 1 : Mouse testis tissue lysates  
Lane 2 : Rat testis tissue lysates  
Lane 3 : MCF-7 cell lysates  
Dilution : 1:1000



For full product information, images and publications, please visit our [website](#).