

Kiss1 antibody

Cat. No. GTX04074

Host	Rabbit
Clonality	Polyclonal
Isotype	IgG
Applications	WB, IHC-P
Reactivity	Human, Rat

Package
100 µl

Applications

Application Note

*Optimal dilutions/concentrations should be determined by the researcher.

Suggested dilution	Recommended dilution
WB	1:300-1:5000
IHC-P	1:200-1:400

Not tested in other applications.

Properties

Form	Liquid
Buffer	10mM TBS, 1% BSA, 50% Glycerol
Preservative	0.03% Proclin300
Storage	Store as concentrated solution. Centrifuge briefly prior to opening vial. For short-term storage (1-2 weeks), store at 4°C. For long-term storage, aliquot and store at -20°C or below. Avoid multiple freeze-thaw cycles.
Concentration	1 mg/ml (Please refer to the vial label for the specific concentration.)
Immunogen	KLH conjugated synthetic peptide derived from human KISS1 (81-145).
Purification	Protein A purified
Conjugation	Unconjugated

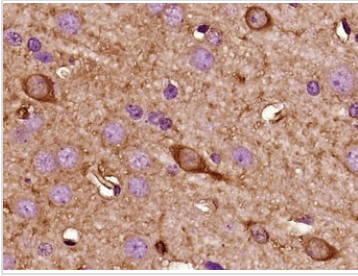
Note

For laboratory research use only. Not for any clinical, therapeutic, or diagnostic use in humans or animals. Not for animal or human consumption.

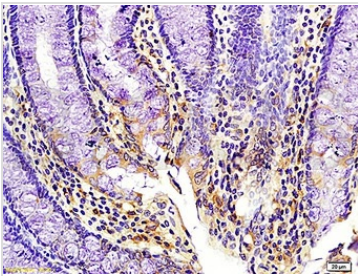
Purchasers shall not, and agree not to enable third parties to, analyze, copy, reverse engineer or otherwise attempt to determine the structure or sequence of the product.



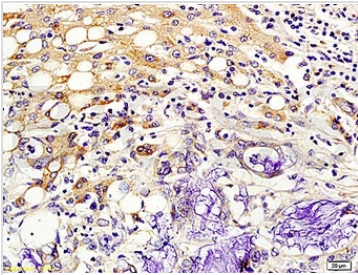
For full product information, images and publications, please visit our [website](#).

DATA IMAGES

GTx04074 IHC-P Image

IHC-P analysis of rat brain tissue using GTx04074 Kiss1 antibody.
 Antigen retrieval : Boiled in sodium citrate buffer (pH 6.0) 15 min
 Dilution : 1:400


GTx04074 IHC-P Image

IHC-P analysis of human colon cancer tissue using GTx04074 Kiss1 antibody.
 Dilution : 1:200


GTx04074 IHC-P Image

IHC-P analysis of human colon cancer tissue using GTx04074 Kiss1 antibody.
 Dilution : 1:200



For full product information, images and publications, please visit our [website](#).