

SOX6 antibody

Cat. No. GTX04085

Host	Rabbit
Clonality	Polyclonal
Isotype	IgG
Applications	WB, IHC-P, FCM, ELISA
Reactivity	Human, Mouse, Rat

Package
100 µg

Applications

Application Note

*Optimal dilutions/concentrations should be determined by the researcher.

Suggested dilution	Recommended dilution
WB	0.25-0.5µg/ml
IHC-P	2-5µg/ml
FCM	1-3µg/1x10 ⁶ cells
ELISA	0.1-0.5µg/ml

Not tested in other applications.

Calculated MW 92 kDa. ([Note](#))

Properties

Form	Liquid
Buffer	4mg Trehalose, 0.9mg NaCl, 0.2mg Na ₂ HPO ₄
Preservative	0.01mg sodium azide
Storage	Store as concentrated solution. Centrifuge briefly prior to opening vial. For short-term storage (1-2 weeks), store at 4°C. For long-term storage, aliquot and store at -20°C or below. Avoid multiple freeze-thaw cycles.
Concentration	0.5 mg/ml (Please refer to the vial label for the specific concentration.)
Immunogen	A synthetic peptide corresponding to a sequence of human SOX6 (DQDTVMKAIQEARKMREQIQREQQQQ).
Purification	Purified by antigen-affinity chromatography
Conjugation	Unconjugated

Note

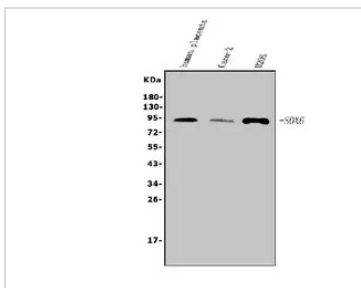
For laboratory research use only. Not for any clinical, therapeutic, or diagnostic use in humans or animals. Not for animal or human consumption.

Purchasers shall not, and agree not to enable third parties to, analyze, copy, reverse engineer or otherwise attempt to determine the structure or sequence of the product.



For full product information, images and publications, please visit our [website](#).

DATA IMAGES



GTX04085 WB Image

WB analysis of various sample lysates using GTX04085 SOX6 antibody.

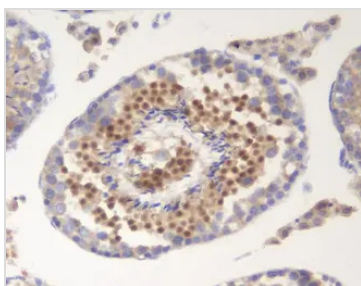
Lane 1 : human placenta tissue lysates

Lane 2 : CACO-2 lysates

Lane 3 : U2OS lysates

Dilution : 0.5 µg/mL

Loading : 50µg

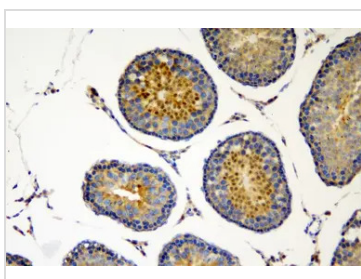


GTX04085 IHC-P Image

IHC-P analysis of mouse testis tissue using GTX04085 SOX6 antibody.

Antigen retrieval : Heat mediated antigen retrieval was performed in EDTA buffer (pH8.0, epitope retrieval solution)

Dilution : 2µg/ml

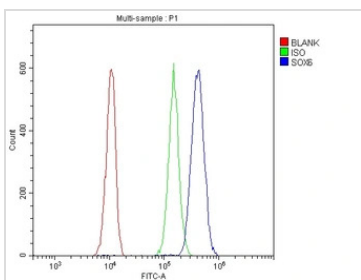


GTX04085 IHC-P Image

IHC-P analysis of rat testis tissue using GTX04085 SOX6 antibody.

Antigen retrieval : Heat mediated antigen retrieval was performed in EDTA buffer (pH8.0, epitope retrieval solution)

Dilution : 2µg/ml



GTX04085 FCM Image

FACS analysis of A549 cells using GTX04085 SOX6 antibody.

Blue : Primary antibody

Green : Isotype control

Red : Unlabelled sample control

Antibody amount : 1µg/1x10⁶ cells



For full product information, images and publications, please visit our [website](#).