

TDO2 antibody [OTI2A4]

Cat. No. GTX04090

Host	Mouse
Clonality	Monoclonal
Isotype	IgG1
Applications	WB, IHC-P
Reactivity	Human, Mouse, Rat

Package
100 µl

Applications

Application Note

*Optimal dilutions/concentrations should be determined by the researcher.

Suggested dilution	Recommended dilution
WB	1:2000
IHC-P	1:50

Not tested in other applications.

Calculated MW 48 kDa. ([Note](#))

Properties

Form	Liquid
Buffer	PBS, 1% BSA, 50% Glycerol
Preservative	0.02% sodium azide
Storage	Store as concentrated solution. Centrifuge briefly prior to opening vial. For short-term storage (1-2 weeks), store at 4°C. For long-term storage, aliquot and store at -20°C or below. Avoid multiple freeze-thaw cycles.
Concentration	1 mg/ml (Please refer to the vial label for the specific concentration.)
Immunogen	Full length human TDO2(NP_005642) produced in HEK293T cell.
Purification	Purified by affinity chromatography
Conjugation	Unconjugated

Note

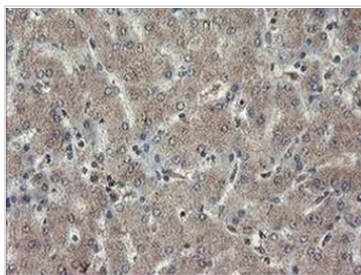
For laboratory research use only. Not for any clinical, therapeutic, or diagnostic use in humans or animals. Not for animal or human consumption.

Purchasers shall not, and agree not to enable third parties to, analyze, copy, reverse engineer or otherwise attempt to determine the structure or sequence of the product.

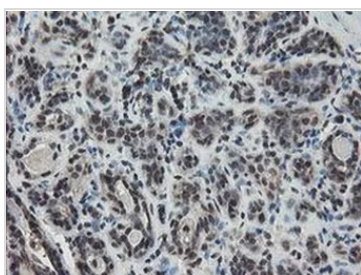


For full product information, images and publications, please visit our [website](#).

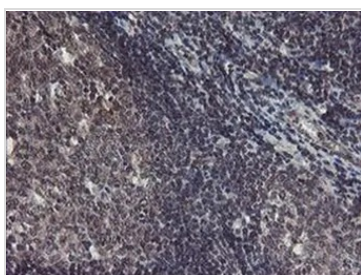
DATA IMAGES

**GTX04090 IHC-P Image**

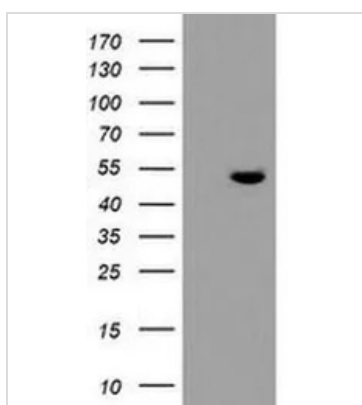
IHC-P analysis of human liver tissue using TDO2 antibody [OTI2A4].
Antigen retrieval : 10mM citric buffer, pH 6.0, 100°C for 10min

**GTX04090 IHC-P Image**

IHC-P analysis of human breast tissue using TDO2 antibody [OTI2A4].
Antigen retrieval : 10mM citric buffer, pH 6.0, 100°C for 10min

**GTX04090 IHC-P Image**

IHC-P analysis of human tonsil tissue using TDO2 antibody [OTI2A4].
Antigen retrieval : 10mM citric buffer, pH 6.0, 100°C for 10min

**GTX04090 WB Image**

WB analysis of 293T cells transfected with human TDO2 using GTX04090 TDO2 antibody [OTI2A4].
Lane 1 : 293T cells transfected with control vector
Lane 2 : 293T cells transfected with human TDO2
Loading : 5 µg per lane



For full product information, images and publications, please visit our [website](#).