

ATP7b antibody

Cat. No. GTX04095

Host	Rabbit
Clonality	Polyclonal
Isotype	IgG
Applications	WB, ICC/IF, IHC-P, FCM
Reactivity	Human, Mouse, Rat

Package
400 µl

Applications

Application Note

*Optimal dilutions/concentrations should be determined by the researcher.

Suggested dilution	Recommended dilution
WB	1:2000
ICC/IF	1:10-1:50
IHC-P	1:10-1:50
FCM	1:10-1:50

Not tested in other applications.

Calculated MW 157 kDa. ([Note](#))

Properties

Form	Liquid
Buffer	PBS
Preservative	0.09% sodium azide
Storage	Store as concentrated solution. Centrifuge briefly prior to opening vial. For short-term storage (1-2 weeks), store at 4°C. For long-term storage, aliquot and store at -20°C or below. Avoid multiple freeze-thaw cycles.
Concentration	Batch dependent (Please refer to the vial label for the specific concentration.)
Immunogen	KLH conjugated synthetic peptide between 1361-1391 amino acids from the C-terminal region of human ATP7B.
Purification	Protein A purified followed by antigen-affinity chromatography
Conjugation	Unconjugated

Note

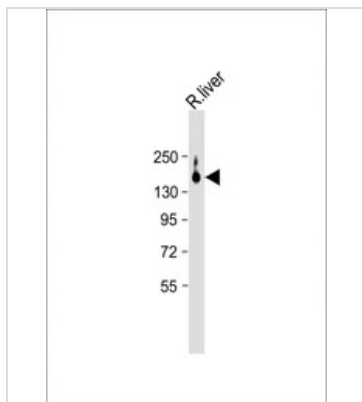
For laboratory research use only. Not for any clinical, therapeutic, or diagnostic use in humans or animals. Not for animal or human consumption.

Purchasers shall not, and agree not to enable third parties to, analyze, copy, reverse engineer or otherwise attempt to determine the structure or sequence of the product.



For full product information, images and publications, please visit our [website](#).

DATA IMAGES

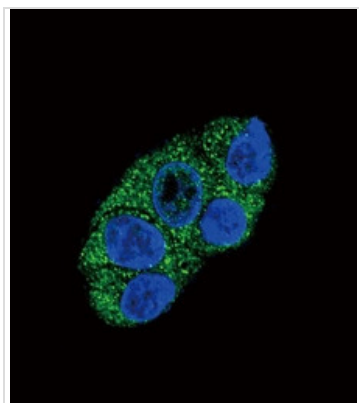


GTx04095 WB Image

WB analysis of rat liver tissue lysates using GTx04095 ATP7b antibody.

Loading : 20 µg

Dilution : 1:2000

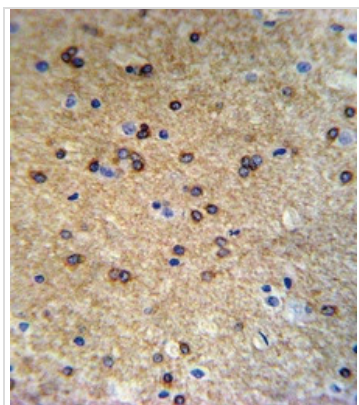


GTx04095 ICC/IF Image

ICC/IF analysis of HepG2 cells using GTx04095 ATP7b antibody.

Green : Primary antibody

Blue : DAPI



GTx04095 IHC-P Image

IHC-P analysis of mouse brain tissue using GTx04095 ATP7b antibody.



For full product information, images and publications, please visit our [website](https://www.genetex.com).