

ARC antibody

Cat. No. GTX04096

Host	Rabbit
Clonality	Polyclonal
Isotype	IgG
Applications	WB, ICC/IF, IHC-P
Reactivity	Human, Mouse, Rat

Package
100 µl

Applications

Application Note

*Optimal dilutions/concentrations should be determined by the researcher.

Suggested dilution	Recommended dilution
WB	1:500-1:2000
ICC/IF	1:100-1:500
IHC-P	1:50-1:200

Not tested in other applications.

Calculated MW 45 kDa. ([Note](#))

Properties

Form	Liquid
Buffer	PBS, 150mM NaCl, 50% Glycerol
Preservative	0.02% sodium azide
Storage	Store as concentrated solution. Centrifuge briefly prior to opening vial. For short-term storage (1-2 weeks), store at 4°C. For long-term storage, aliquot and store at -20°C or below. Avoid multiple freeze-thaw cycles.
Concentration	1 mg/ml (Please refer to the vial label for the specific concentration.)
Immunogen	A synthesized peptide derived from human ARC(Accession Q7LC44), corresponding to amino acid residues G277-R306.
Purification	Purified by antigen-affinity chromatography From serum
Conjugation	Unconjugated

Note

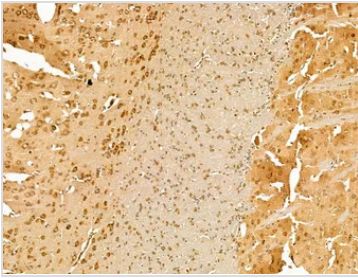
For laboratory research use only. Not for any clinical, therapeutic, or diagnostic use in humans or animals. Not for animal or human consumption.

Purchasers shall not, and agree not to enable third parties to, analyze, copy, reverse engineer or otherwise attempt to determine the structure or sequence of the product.



For full product information, images and publications, please visit our [website](#).

DATA IMAGES

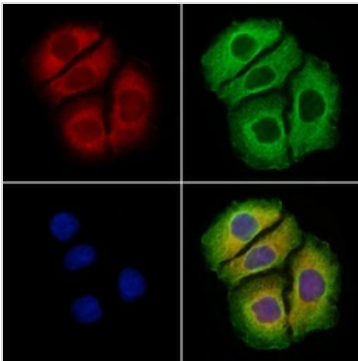


GTX04096 IHC-P Image

IHC-P analysis of rat brain tissue using GTX04096 ARC antibody.

Antigen retrieval : Heat mediated antigen retrieval step in citrate buffer

Dilution : 1:100



GTX04096 ICC/IF Image

ICC/IF analysis of PFA-fixed HeLa cells using GTX04096 ARC antibody.

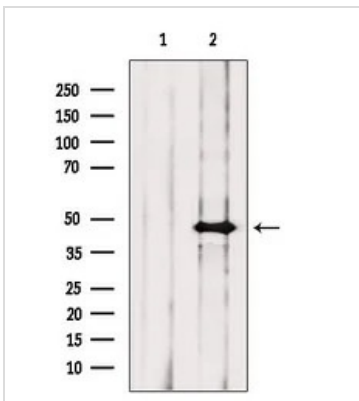
Red : Primary antibody

Green : beta tubulin

Blue : DAPI

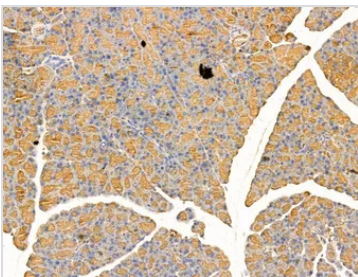
Permeabilize : 0.1% Triton X-100

Dilution : 1:200



GTX04096 WB Image

WB analysis of C6 cell lysates using GTX04096 ARC antibody. The lane on the left was treated with blocking peptide.



GTX04096 IHC-P Image

IHC-P analysis of rat pancreatic tissue using GTX04096 ARC antibody.

Antigen retrieval : Heat mediated antigen retrieval step in citrate buffer

Dilution : 1:100



For full product information, images and publications, please visit our [website](https://www.genetex.com).