

PTP1B antibody

Cat. No. GTX04098

Host	Rabbit
Clonality	Polyclonal
Isotype	IgG
Applications	WB, IHC-P, IHC-Fr, FCM
Reactivity	Human, Mouse, Rat

Package
100 µg

Applications

Application Note

*Optimal dilutions/concentrations should be determined by the researcher.

Suggested dilution	Recommended dilution
WB	0.1-0.5µg/ml
IHC-P	0.5-1µg/ml
IHC-Fr	0.5-1µg/ml
FCM	1-3µg/10 ⁶ cells

Note : Antigen retrieval by heat

Not tested in other applications.

Calculated MW 50 kDa. ([Note](#))

Properties

Form	Liquid
Buffer	4mg Trehalose, 0.9mg NaCl, 0.2mg Na ₂ HPO ₄
Preservative	0.05 mg sodium azide
Storage	Store as concentrated solution. Centrifuge briefly prior to opening vial. For short-term storage (1-2 weeks), store at 4°C. For long-term storage, aliquot and store at -20°C or below. Avoid multiple freeze-thaw cycles.
Concentration	0.5 mg/ml (Please refer to the vial label for the specific concentration.)
Immunogen	A synthetic peptide corresponding to a sequence at the N-terminus of human PTP1B (4-30aa EKEFEQIDKSGSWAAIYQDIRHEASDF), different from the related mouse sequence by three amino acids, and from the related rat sequence by two amino acids.
Purification	Purified by antigen-affinity chromatography
Conjugation	Unconjugated



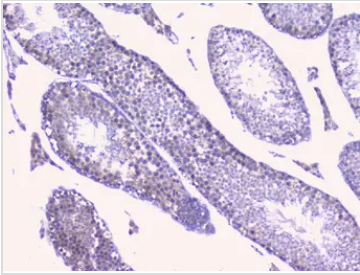
For full product information, images and publications, please visit our [website](#).

For laboratory research use only. Not for any clinical, therapeutic, or diagnostic use in humans or animals. Not for animal or human consumption.

Note

Purchasers shall not, and agree not to enable third parties to, analyze, copy, reverse engineer or otherwise attempt to determine the structure or sequence of the product.

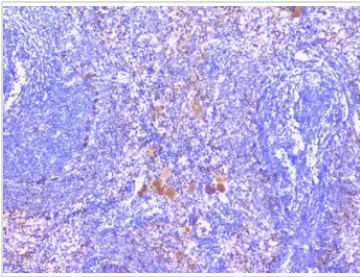
DATA IMAGES

**GTX04098 IHC-P Image**

IHC-P analysis of mouse testis tissues using GTX04098 PTP1B antibody.

Dilution : 1 µg/ml

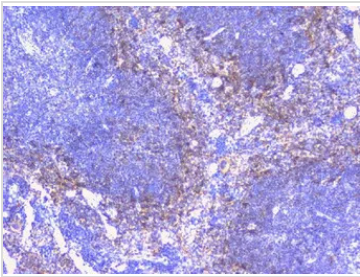
Antigen retrieval : Heat mediated antigen retrieval was performed in citrate buffer (pH 6, epitope retrieval solution) for 20 mins

**GTX04098 IHC-P Image**

IHC-P analysis of rat spleen tissues using GTX04098 PTP1B antibody.

Dilution : 1 µg/ml

Antigen retrieval : Heat mediated antigen retrieval was performed in citrate buffer (pH 6, epitope retrieval solution) for 20 mins

**GTX04098 IHC-P Image**

IHC-P analysis of mouse spleen tissues using GTX04098 PTP1B antibody.

Dilution : 1 µg/ml

Antigen retrieval : Heat mediated antigen retrieval was performed in citrate buffer (pH 6, epitope retrieval solution) for 20 mins



For full product information, images and publications, please visit our [website](#).