

POU2F3 antibody

Cat. No. GTX04103

Host	Rabbit
Clonality	Polyclonal
Isotype	IgG
Applications	WB, IHC-P, IHC
Reactivity	Human, Mouse, Rat

Package
100 µl

Applications

Application Note

*Optimal dilutions/concentrations should be determined by the researcher.

Suggested dilution	Recommended dilution
WB	Assay dependent
IHC-P	Assay dependent
IHC	Assay dependent

Not tested in other applications.

Calculated MW 47 kDa. ([Note](#))

Properties

Form	Liquid
Buffer	PBS, 2% sucrose
Preservative	0.09% sodium azide
Storage	Store as concentrated solution. Centrifuge briefly prior to opening vial. For short-term storage (1-2 weeks), store at 4°C. For long-term storage, aliquot and store at -20°C or below. Avoid multiple freeze-thaw cycles.
Concentration	0.5 mg/ml (Please refer to the vial label for the specific concentration.)
Immunogen	The immunogen is a synthetic peptide directed towards the N terminal region of human POU2F3.
Purification	Purified by affinity chromatography
Conjugation	Unconjugated

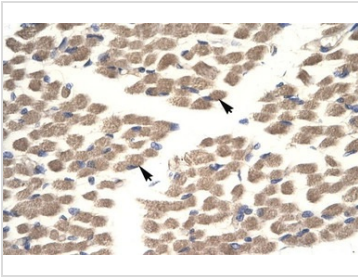
Note

For laboratory research use only. Not for any clinical, therapeutic, or diagnostic use in humans or animals. Not for animal or human consumption.

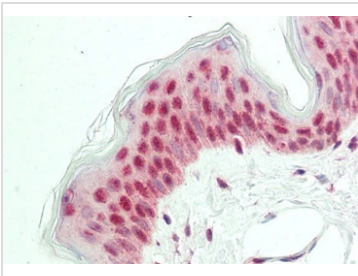
Purchasers shall not, and agree not to enable third parties to, analyze, copy, reverse engineer or otherwise attempt to determine the structure or sequence of the product.



For full product information, images and publications, please visit our [website](#).

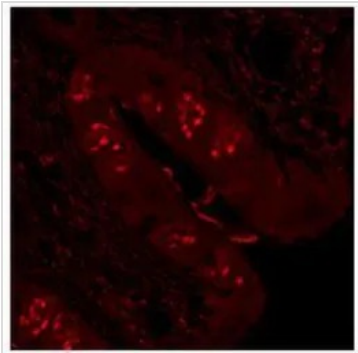
DATA IMAGES

GTX04103 IHC Image

IHC analysis of human muscle tissue using GTX04103 POU2F3 antibody.


GTX04103 IHC-P Image

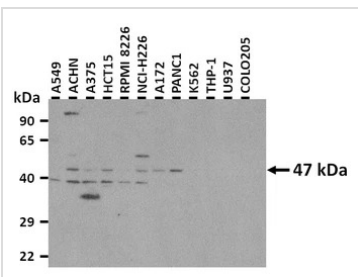
IHC-P analysis of human skin tissue using GTX04103 POU2F3 antibody.

Dilution : 1:200


GTX04103 IHC Image

IHC analysis of mouse tongue tissue using GTX04103 POU2F3 antibody.

Dilution : 1:100


GTX04103 WB Image

WB analysis of various sample lysates using GTX04103 POU2F3 antibody.

Dilution : 0.5µg/ml

Loading : 25µg per lane



For full product information, images and publications, please visit our [website](https://www.genetex.com).