

Goat Anti-Human IgM (Mu chain) antibody, F(ab')<sub>2</sub> fragment, pre-adsorbed**Cat. No. GTX04121**

<b>Host</b>	Goat
<b>Clonality</b>	Polyclonal
<b>Isotype</b>	IgG F(ab') <sub>2</sub>
<b>Applications</b>	WB, ICC/IF, FCM, ELISA, Activation, ELISPOT
<b>Reactivity</b>	Human

**Package**  
500 µg

## Applications

**Application Note**

\*Optimal dilutions/concentrations should be determined by the researcher.

Suggested dilution	Recommended dilution
WB	Assay dependent
ICC/IF	Assay dependent
FCM	Assay dependent
ELISA	Assay dependent
Activation	Assay dependent
ELISPOT	Assay dependent

Not tested in other applications.

**Product Note** Pre-adsorbed with Human IgG and IgA. May react with IgM from other species.

## Properties

<b>Form</b>	Liquid
<b>Buffer</b>	Borate buffered saline
<b>Preservative</b>	No preservatives
<b>Storage</b>	Store as concentrated solution. Centrifuge briefly prior to opening vial. Store at 4°C.
<b>Concentration</b>	0.5 mg/ml (Please refer to the vial label for the specific concentration.)
<b>Immunogen</b>	Pepsin digest of Goat Anti-Human IgM.
<b>Purification</b>	Purified IgG
<b>Conjugation</b>	Unconjugated



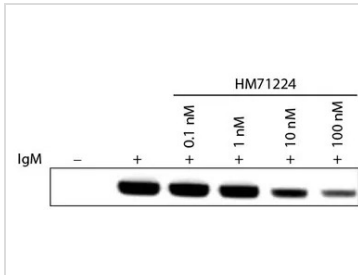
For full product information, images and publications, please visit our [website](#).

Date 2026 / 01 / 29 Page 1 of 2

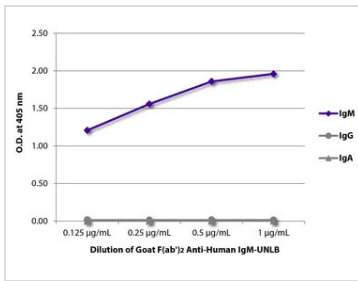
For laboratory research use only. Not for any clinical, therapeutic, or diagnostic use in humans or animals. Not for animal or human consumption.

**Note**

Purchasers shall not, and agree not to enable third parties to, analyze, copy, reverse engineer or otherwise attempt to determine the structure or sequence of the product.

**DATA IMAGES**

**GTx04121 WB Image**

WB analysis of Ramos cell lysates treated with HM71224 using PLCG2 (phospho Tyr1217) antibody followed by GTx04121 Goat Anti-Human IgM (Mu chain) antibody, F(ab')<sub>2</sub> fragment, pre-adsorbed.


**GTx04121 ELISA Image**

ELISA analysis of purified human immunoglobulins using serially diluted GTx04121 Goat Anti-Human IgM (Mu chain) antibody, F(ab')<sub>2</sub> fragment, pre-adsorbed followed by Swine Anti-Goat IgG(H+L) antibody, pre-adsorbed (HRP).



For full product information, images and publications, please visit our [website](https://www.genetex.com).