

Goat Anti-Human IgM (Mu chain) antibody, F(ab')₂ fragment, pre-adsorbed (PE)

Cat. No. GTX04121-08

Host	Goat
Clonality	Polyclonal
Isotype	IgG F(ab') ₂
Applications	ICC/IF, FCM, ELISA, Activation, ELISPOT
Reactivity	Human

Package

250 µg

Applications

Application Note

*Optimal dilutions/concentrations should be determined by the researcher.

Suggested dilution	Recommended dilution
ICC/IF	Assay dependent
FCM	≤ 0.1 µg/10 ⁶ cells
ELISA	≤ 1 µg/mL
Activation	Assay dependent
ELISPOT	Assay dependent

Note : The suggested use of these reagents is in a final volume of 100µl.

Not tested in other applications.

Product Note Pre-adsorbed with Human IgG and IgA. May react with IgM from other species.

Properties

Form	Liquid
Buffer	PBS, a stabilizer
Preservative	0.09% sodium azide
Storage	Store as concentrated solution. Centrifuge briefly prior to opening vial. Store at 4°C. DO NOT FREEZE. Protect from light.
Concentration	0.25 mg/ml (Please refer to the vial label for the specific concentration.)
Immunogen	Pepsin digest of Goat Anti-Human IgM.
Purification	Purified IgG
Conjugation	Phycoerythrin (PE) Wavelength



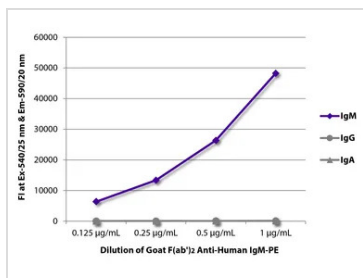
For full product information, images and publications, please visit our [website](#).

For laboratory research use only. Not for any clinical, therapeutic, or diagnostic use in humans or animals. Not for animal or human consumption.

Note

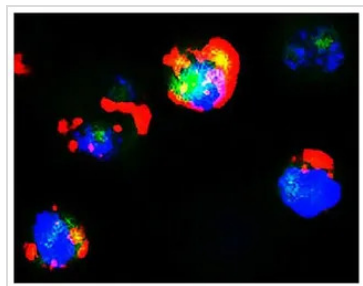
Purchasers shall not, and agree not to enable third parties to, analyze, copy, reverse engineer or otherwise attempt to determine the structure or sequence of the product.

DATA IMAGES



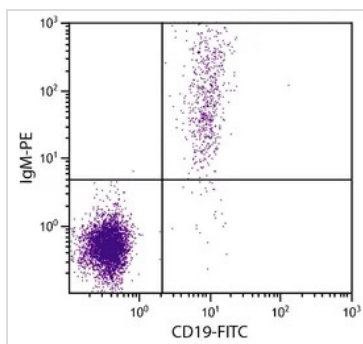
GTX04121-08 ELISA Image

ELISA analysis of purified human immunoglobulins using serially diluted GTX04121-08 Goat Anti-Human IgM (Mu chain) antibody, F(ab')₂ fragment, pre-adsorbed (PE).



GTX04121-08 ICC/IF Image

ICC/IF analysis of GFP+ hFCMR-transfected cells lysates using GTX04121-08 Goat Anti-Human IgM (Mu chain) antibody, F(ab')₂ fragment, pre-adsorbed (PE). Blue : DAPI



GTX04121-08 FCM Image

FACS analysis of human peripheral blood lymphocytes using Mouse Anti-Human CD19 antibody (FITC) and GTX04121-08 Goat Anti-Human IgM (Mu chain) antibody, F(ab')₂ fragment, pre-adsorbed (PE).



For full product information, images and publications, please visit our [website](#).