

Goat Anti-Human IgM (Mu chain) antibody, pre-adsorbed

Cat. No. GTX04122

Host	Goat
Clonality	Polyclonal
Isotype	IgG
Applications	WB, ELISA
Reactivity	Human

Package
1 mg

Applications

Application Note

*Optimal dilutions/concentrations should be determined by the researcher.

Suggested dilution	Recommended dilution
WB	Assay dependent
ELISA	$\leq 1 \mu\text{g/mL}$

Not tested in other applications.

Product Note

Pre-adsorbed with Human IgG and IgA; mouse, bovine, and horse serum proteins (SP). May react with IgM from other species.

Properties

Form	Liquid
Buffer	Borate buffered saline
Preservative	No preservatives
Storage	Store as concentrated solution. Centrifuge briefly prior to opening vial. Store at 4°C.
Concentration	1 mg/ml (Please refer to the vial label for the specific concentration.)
Immunogen	Pooled antisera from goats hyperimmunized with human IgM
Purification	Purified by antigen-affinity chromatography
Conjugation	Unconjugated

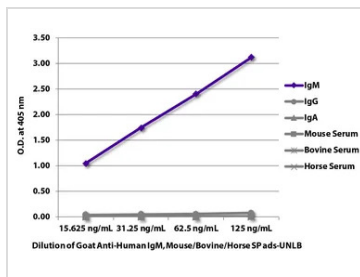
Note

For laboratory research use only. Not for any clinical, therapeutic, or diagnostic use in humans or animals. Not for animal or human consumption.

Purchasers shall not, and agree not to enable third parties to, analyze, copy, reverse engineer or otherwise attempt to determine the structure or sequence of the product.



For full product information, images and publications, please visit our [website](#).

DATA IMAGES

GTx04122 ELISA Image

ELISA analysis of purified human immunoglobulins and mouse, bovine, and horse serum using serially diluted GTx04122 Goat Anti-Human IgM (Mu chain) antibody, pre-adsorbed followed by Mouse Anti-Goat IgG Fc antibody (HRP).



For full product information, images and publications, please visit our [website](https://www.genetex.com).