

Goat Anti-Human IgD (Heavy chain) antibody, pre-adsorbed (FITC)

Cat. No. GTX04123-06

Host	Goat
Clonality	Polyclonal
Isotype	IgG
Applications	IHC-P, IHC-Fr, FCM, ELISA
Reactivity	Human

Package
1 mg

Applications

Application Note

*Optimal dilutions/concentrations should be determined by the researcher.

Suggested dilution	Recommended dilution
IHC-P	Assay dependent
IHC-Fr	Assay dependent
FCM	$\leq 1 \mu\text{g}/10^6\text{cells}$
ELISA	1:100-1:400

Note : The suggested use of these reagents is in a final volume of 100 μl .

Not tested in other applications.

Product Note Pre-adsorbed with Human IgG, IgM, and IgA. May react with IgD from other species.

Properties

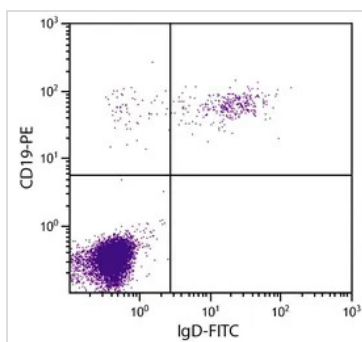
Form	Liquid
Buffer	PBS
Preservative	0.09% sodium azide
Storage	Store as concentrated solution. Centrifuge briefly prior to opening vial. Store at 4°C. Protect from light.
Concentration	1 mg/ml (Please refer to the vial label for the specific concentration.)
Immunogen	Pooled antisera from goats hyperimmunized with human IgD
Purification	Purified by antigen-affinity chromatography
Conjugation	Fluorescein isothiocyanate (FITC) Wavelength

For full product information, images and publications, please visit our [website](#).

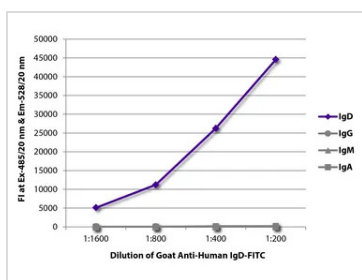
For laboratory research use only. Not for any clinical, therapeutic, or diagnostic use in humans or animals. Not for animal or human consumption.

Note

Purchasers shall not, and agree not to enable third parties to, analyze, copy, reverse engineer or otherwise attempt to determine the structure or sequence of the product.

DATA IMAGES

GTx04123-06 FCM Image

FACS analysis of human peripheral blood lymphocytes using Mouse Anti-Human CD19 antibody (PE) and GTx04123-06 Goat Anti-Human IgD (Heavy chain) antibody, pre-adsorbed (FITC).


GTx04123-06 ELISA Image

ELISA analysis of purified human immunoglobulins using serially diluted GTx04123-06 Goat Anti-Human IgD (Heavy chain) antibody, pre-adsorbed (FITC).



For full product information, images and publications, please visit our [website](https://www.genetex.com).