

# Goat Anti-Human IgA (Heavy chain) antibody, pre-adsorbed (TRITC)

**Cat. No. GTX04126-25**

<b>Host</b>	Goat
<b>Clonality</b>	Polyclonal
<b>Isotype</b>	IgG
<b>Applications</b>	WB, ICC/IF, IHC-P, IHC-Fr, FCM, IP, ELISA, Depletion, ELISPOT, Multiplexing, Purification
<b>Reactivity</b>	Human

**Package**  
1 mg

## Applications

### Application Note

\*Optimal dilutions/concentrations should be determined by the researcher.

Suggested dilution	Recommended dilution
WB	Assay dependent
ICC/IF	Assay dependent
IHC-P	Assay dependent
IHC-Fr	Assay dependent
FCM	Assay dependent
IP	Assay dependent
ELISA	1:100-1:400
Depletion	Assay dependent
ELISPOT	Assay dependent
Multiplexing	Assay dependent
Purification	Assay dependent

Not tested in other applications.

**Product Note** Pre-adsorbed with Human IgG and IgM. May react with IgA from other species.

## Properties

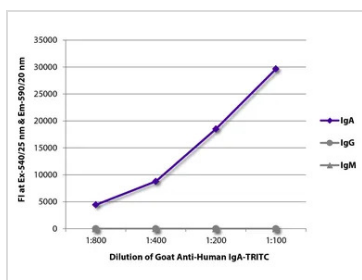
<b>Form</b>	Liquid
<b>Buffer</b>	PBS
<b>Preservative</b>	0.09% sodium azide
<b>Storage</b>	Store as concentrated solution. Centrifuge briefly prior to opening vial. Store at 4°C. Protect from light.
<b>Concentration</b>	1 mg/ml (Please refer to the vial label for the specific concentration.)



For full product information, images and publications, please visit our [website](#).

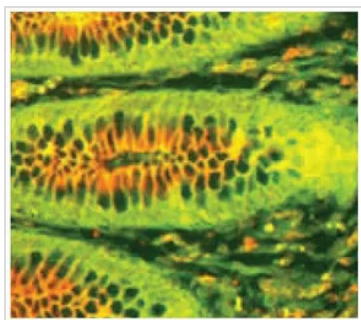
<b>Immunogen</b>	Pooled antisera from goats hyperimmunized with human IgA
<b>Purification</b>	Purified by antigen-affinity chromatography
<b>Conjugation</b>	Tetramethylrhodamine (TRITC) <a href="#">Wavelength</a>
<b>Note</b>	For laboratory research use only. Not for any clinical, therapeutic, or diagnostic use in humans or animals. Not for animal or human consumption.  Purchasers shall not, and agree not to enable third parties to, analyze, copy, reverse engineer or otherwise attempt to determine the structure or sequence of the product.

## DATA IMAGES



### GTx04126-25 ELISA Image

ELISA analysis of purified human immunoglobulins using serially diluted GTx04126-25 Goat Anti-Human IgA (Heavy chain) antibody, pre-adsorbed (TRITC).



### GTx04126-25 IHC-P Image

IHC-P analysis of human intestinal epithelium tissue using secretory component antibody (FITC) followed by GTx04126-25 Goat Anti-Human IgA (Heavy chain) antibody, pre-adsorbed (TRITC).



For full product information, images and publications, please visit our [website](#).