

# Goat Anti-Human kappa light chain antibody, F(ab')<sub>2</sub> fragment, pre-adsorbed (Biotin)

## Cat. No. GTX04131-02

|                     |                                    |
|---------------------|------------------------------------|
| <b>Host</b>         | Goat                               |
| <b>Clonality</b>    | Polyclonal                         |
| <b>Isotype</b>      | IgG F(ab') <sub>2</sub>            |
| <b>Applications</b> | WB, ICC/IF, FCM, ELISA, Activation |
| <b>Reactivity</b>   | Human                              |

### Package

500 µg

## Applications

### Application Note

\*Optimal dilutions/concentrations should be determined by the researcher.

| Suggested dilution | Recommended dilution         |
|--------------------|------------------------------|
| WB                 | Assay dependent              |
| ICC/IF             | Assay dependent              |
| FCM                | ≤ 1 µg/10 <sup>6</sup> cells |
| ELISA              | 1:5000-1:20000               |
| Activation         | Assay dependent              |

**Note : The suggested use of these reagents is in a final volume of 100µl.**

Not tested in other applications.

### Product Note

Pre-adsorbed with Human λ light chains. May react with κ light chains from other species.

## Properties

|                      |   |
|----------------------|---|
| <b>Form</b>          | Liquid  |
| <b>Buffer</b>        | PBS   |
| <b>Preservative</b>  | 0.09% sodium azide  |
| <b>Storage</b>       | Store as concentrated solution. Centrifuge briefly prior to opening vial. Store at 4°C. |
| <b>Concentration</b> | 0.5 mg/ml (Please refer to the vial label for the specific concentration.)              |
| <b>Immunogen</b>     | Pepsin digest of Goat Anti-Human Kappa.   |
| <b>Purification</b>  | Purified IgG  |
| <b>Conjugation</b>   | Biotin  |



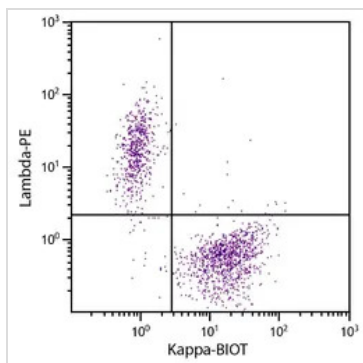
For full product information, images and publications, please visit our [website](#).

For laboratory research use only. Not for any clinical, therapeutic, or diagnostic use in humans or animals. Not for animal or human consumption.

**Note**

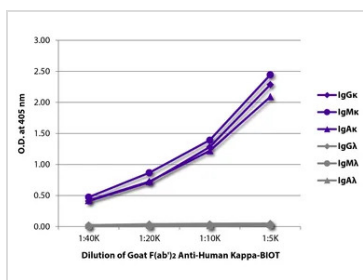
Purchasers shall not, and agree not to enable third parties to, analyze, copy, reverse engineer or otherwise attempt to determine the structure or sequence of the product.

DATA IMAGES



**GTX04131-02 FCM Image**

FACS analysis of CD19+ human B-lymphocytes using Goat Anti-Human Lambda antibody, F(ab')<sub>2</sub> fragment, pre-adsorbed (PE) and GTX04131-02 Goat Anti-Human kappa light chain antibody, F(ab')<sub>2</sub> fragment, pre-adsorbed (Biotin) followed by Streptavidin (FITC).



**GTX04131-02 ELISA Image**

ELISA analysis of purified human immunoglobulins using serially diluted GTX04131-02 Goat Anti-Human kappa light chain antibody, F(ab')<sub>2</sub> fragment, pre-adsorbed (Biotin) followed by Streptavidin (HRP).



For full product information, images and publications, please visit our [website](#).