

# Goat Anti-Human kappa light chain antibody, F(ab')<sub>2</sub> fragment, pre-adsorbed (FITC)

**Cat. No. GTX04131-06**

<b>Host</b>	Goat
<b>Clonality</b>	Polyclonal
<b>Isotype</b>	IgG F(ab') <sub>2</sub>
<b>Applications</b>	WB, ICC/IF, FCM, ELISA, Activation
<b>Reactivity</b>	Human

Package

500 µg

## Applications

### Application Note

\*Optimal dilutions/concentrations should be determined by the researcher.

Suggested dilution	Recommended dilution
WB	Assay dependent
ICC/IF	Assay dependent
FCM	≤ 1 µg/10 <sup>6</sup> cells
ELISA	1:200-1:400
Activation	Assay dependent

**Note : The suggested use of these reagents is in a final volume of 100µl.**

Not tested in other applications.

### Product Note

Pre-adsorbed with Human λ light chains. May react with κ light chains from other species.

## Properties

<b>Form</b>	Liquid
<b>Buffer</b>	PBS
<b>Preservative</b>	0.09% sodium azide
<b>Storage</b>	Store as concentrated solution. Centrifuge briefly prior to opening vial. Store at 4°C. Protect from light.
<b>Concentration</b>	0.5 mg/ml (Please refer to the vial label for the specific concentration.)
<b>Immunogen</b>	Pepsin digest of Goat Anti-Human Kappa.
<b>Purification</b>	Purified IgG
<b>Conjugation</b>	Fluorescein isothiocyanate (FITC) <a href="#">Wavelength</a>

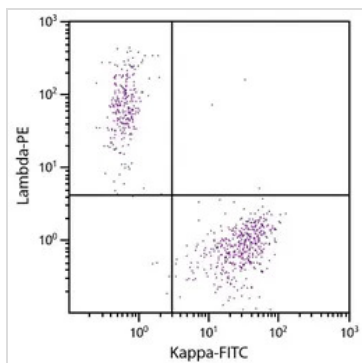


For full product information, images and publications, please visit our [website](#).

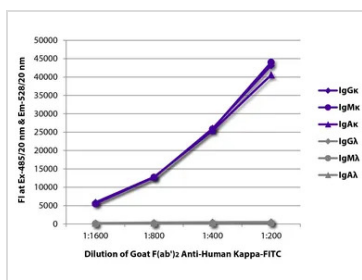
For laboratory research use only. Not for any clinical, therapeutic, or diagnostic use in humans or animals. Not for animal or human consumption.

**Note**

Purchasers shall not, and agree not to enable third parties to, analyze, copy, reverse engineer or otherwise attempt to determine the structure or sequence of the product.

**DATA IMAGES**

**GTX04131-06 FCM Image**

FACS analysis of CD19+ human B-lymphocytes using Goat Anti-Human Lambda antibody, F(ab')<sub>2</sub> fragment, pre-absorbed (PE) and GTX04131-06 Goat Anti-Human kappa light chain antibody, F(ab')<sub>2</sub> fragment, pre-adsorbed (FITC).


**GTX04131-06 ELISA Image**

ELISA analysis of purified human immunoglobulins using serially diluted GTX04131-06 Goat Anti-Human kappa light chain antibody, F(ab')<sub>2</sub> fragment, pre-adsorbed (FITC).



For full product information, images and publications, please visit our [website](https://www.genetex.com).