

Goat Anti-Rat IgM (Mu chain) antibody, pre-adsorbed (HRP)

Cat. No. GTX04137-01

Host	Goat
Clonality	Polyclonal
Isotype	IgG
Applications	WB, ICC/IF, IHC-P, IHC-Fr, FCM, ELISA
Reactivity	Rat

Package
1 ml

Applications

Application Note

*Optimal dilutions/concentrations should be determined by the researcher.

Suggested dilution	Recommended dilution
WB	Assay dependent
ICC/IF	Assay dependent
IHC-P	Assay dependent
IHC-Fr	Assay dependent
FCM	Assay dependent
ELISA	1:4000-1:8000

Not tested in other applications.

Product Note Pre-adsorbed with Rat IgG. May react with immunoglobulins from other species.

Properties

Form	Liquid
Buffer	PBS, 50% glycerol
Preservative	No preservatives
Storage	Store as concentrated solution. Centrifuge briefly prior to opening vial. Store at 4°C.
Concentration	Batch dependent (Please refer to the vial label for the specific concentration.)
Immunogen	Pooled antisera from goats hyperimmunized with rat IgM
Purification	Purified by antigen-affinity chromatography
Conjugation	Horseradish peroxidase(HRP)

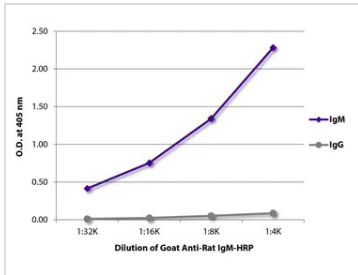


For full product information, images and publications, please visit our [website](#).

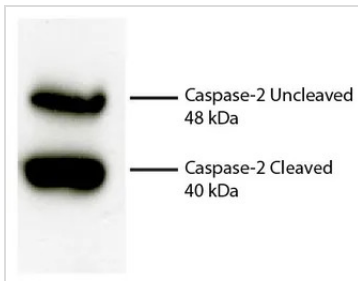
For laboratory research use only. Not for any clinical, therapeutic, or diagnostic use in humans or animals. Not for animal or human consumption.

Note

Purchasers shall not, and agree not to enable third parties to, analyze, copy, reverse engineer or otherwise attempt to determine the structure or sequence of the product.

DATA IMAGES

GTx04137-01 ELISA Image

ELISA analysis of purified rat immunoglobulins using serially diluted GTx04137-01 Goat Anti-Rat IgM (Mu chain) antibody, pre-adsorbed (HRP).


GTx04137-01 WB Image

WB analysis of Jurkat cell lysates using Rat Anti-Human Caspase-2 antibody followed by GTx04137-01 Goat Anti-Rat IgM (Mu chain) antibody, pre-adsorbed (HRP).



For full product information, images and publications, please visit our [website](https://www.genetex.com).