

Goat Anti-Rat IgM (Mu chain) antibody, pre-adsorbed (Biotin)

Cat. No. GTX04137-02

Host	Goat
Clonality	Polyclonal
Isotype	IgG
Applications	WB, ICC/IF, IHC-P, IHC-Fr, FCM, ELISA
Reactivity	Rat

Package
1 mg

Applications

Application Note

*Optimal dilutions/concentrations should be determined by the researcher.

Suggested dilution	Recommended dilution
WB	Assay dependent
ICC/IF	Assay dependent
IHC-P	Assay dependent
IHC-Fr	Assay dependent
FCM	Assay dependent
ELISA	1:5000-1:20000

Not tested in other applications.

Product Note Pre-adsorbed with Rat IgG. May react with immunoglobulins from other species.

Properties

Form	Liquid
Buffer	PBS
Preservative	0.09% sodium azide
Storage	Store as concentrated solution. Centrifuge briefly prior to opening vial. Store at 4°C.
Concentration	0.5 mg/ml (Please refer to the vial label for the specific concentration.)
Immunogen	Pooled antisera from goats hyperimmunized with rat IgM
Purification	Purified by antigen-affinity chromatography
Conjugation	Biotin

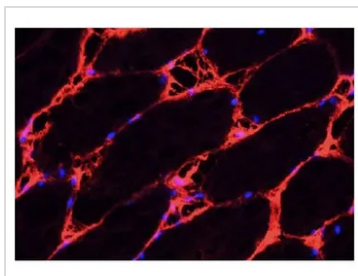


For full product information, images and publications, please visit our [website](#).

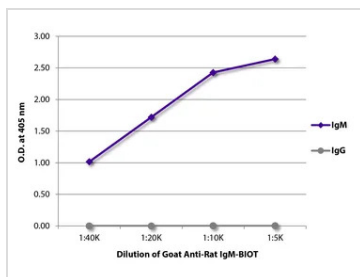
For laboratory research use only. Not for any clinical, therapeutic, or diagnostic use in humans or animals. Not for animal or human consumption.

Note

Purchasers shall not, and agree not to enable third parties to, analyze, copy, reverse engineer or otherwise attempt to determine the structure or sequence of the product.

DATA IMAGES

GTX04137-02 IHC-Fr Image

IHC-Fr analysis of rat gastrocnemius muscle tissue using GTX04137-02 Goat Anti-Rat IgM (Mu chain) antibody, pre-adsorbed (Biotin) followed by a CY3 secondary reagent and DAPI.


GTX04137-02 ELISA Image

ELISA analysis of purified rat immunoglobulins using serially diluted GTX04137-02 Goat Anti-Rat IgM (Mu chain) antibody, pre-adsorbed (Biotin).



For full product information, images and publications, please visit our [website](https://www.genetex.com).