

Mouse Anti-Rat IgG1 antibody [G11C5] (Biotin)

Cat. No. GTX04139-02

Host	Mouse
Clonality	Monoclonal
Isotype	IgG2b
Applications	IHC-Fr, FCM, ELISA, ELISPOT
Reactivity	Rat

Package
500 µg

Applications

Application Note

*Optimal dilutions/concentrations should be determined by the researcher.

Suggested dilution	Recommended dilution
IHC-Fr	Assay dependent
FCM	$\leq 1 \mu\text{g}/10^6\text{cells}$
ELISA	1:5000-1:10000
ELISPOT	Assay dependent

Note : The suggested use of these reagents is in a final volume of 100µl.

Not tested in other applications.

Properties

Form	Liquid
Buffer	PBS
Preservative	0.09% sodium azide
Storage	Store as concentrated solution. Centrifuge briefly prior to opening vial. Store at 4°C.
Concentration	0.5 mg/ml (Please refer to the vial label for the specific concentration.)
Immunogen	Rat IgG1 hybridoma
Purification	Purified IgG2b
Conjugation	Biotin

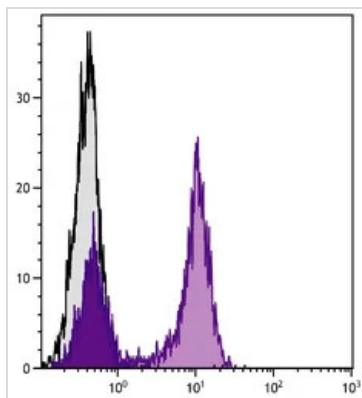
Note

For laboratory research use only. Not for any clinical, therapeutic, or diagnostic use in humans or animals. Not for animal or human consumption.

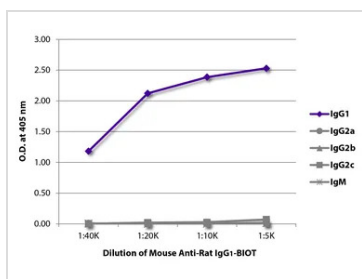
Purchasers shall not, and agree not to enable third parties to, analyze, copy, reverse engineer or otherwise attempt to determine the structure or sequence of the product.



For full product information, images and publications, please visit our [website](#).

DATA IMAGES

GTX04139-02 FCM Image

FACS analysis of BALB/c mouse splenocytes using Rat Anti-Mouse CD22 antibody followed by GTX04139-02 Mouse Anti-Rat IgG1 antibody [G11C5] (Biotin) and Streptavidin (FITC).


GTX04139-02 ELISA Image

ELISA analysis of purified rat immunoglobulins using serially diluted GTX04139-02 Mouse Anti-Rat IgG1 antibody [G11C5] (Biotin) followed by Streptavidin (HRP).



For full product information, images and publications, please visit our [website](https://www.genetex.com).