

## Mouse Anti-Rat IgG2a antibody [2A8F4] (FITC)

Cat. No. GTX04140-06

Host	Mouse
Clonality	Monoclonal
Isotype	IgG1
Applications	IHC-Fr, FCM, ELISA, ELISPOT
Reactivity	Rat

Package  
500 µg

## Applications

## Application Note

\*Optimal dilutions/concentrations should be determined by the researcher.

Suggested dilution	Recommended dilution
IHC-Fr	Assay dependent
FCM	$\leq 1 \mu\text{g}/10^6\text{cells}$
ELISA	1:200-1:400
ELISPOT	Assay dependent

**Note : The suggested use of these reagents is in a final volume of 100µl.**

Not tested in other applications.

## Properties

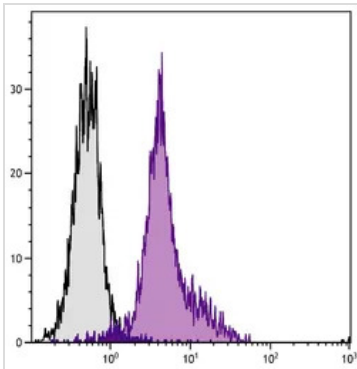
Form	Liquid
Buffer	PBS
Preservative	0.09% sodium azide
Storage	Store as concentrated solution. Centrifuge briefly prior to opening vial. Store at 4°C. Protect from light.
Concentration	0.5 mg/ml (Please refer to the vial label for the specific concentration.)
Immunogen	Rat IgG2a hybridoma
Purification	Purified IgG1
Conjugation	Fluorescein isothiocyanate (FITC) <a href="#">Wavelength</a>

## Note

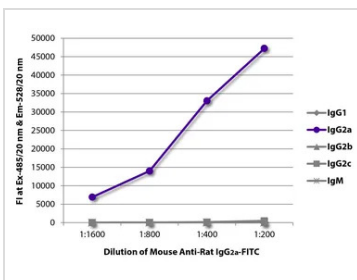
For laboratory research use only. Not for any clinical, therapeutic, or diagnostic use in humans or animals. Not for animal or human consumption.

Purchasers shall not, and agree not to enable third parties to, analyze, copy, reverse engineer or otherwise attempt to determine the structure or sequence of the product.

For full product information, images and publications, please visit our [website](#).

**DATA IMAGES**

**GTX04140-06 FCM Image**

FACS analysis of BALB/c mouse splenocytes using Rat Anti-Mouse CD11a antibody followed by GTX04140-06 Mouse Anti-Rat IgG2a antibody [2A8F4] (FITC).


**GTX04140-06 ELISA Image**

ELISA analysis of purified rat immunoglobulins using serially diluted GTX04140-06 Mouse Anti-Rat IgG2a antibody [2A8F4] (FITC).



For full product information, images and publications, please visit our [website](http://www.genetex.com).