

# Mouse Anti-Rat kappa light chain antibody [K4F5] (Biotin)

**Cat. No. GTX04145-02**

<b>Host</b>	Mouse
<b>Clonality</b>	Monoclonal
<b>Isotype</b>	IgG2a
<b>Application</b>	WB, IHC-Fr, FACS, ELISA
<b>Reactivity</b>	Rat

**Package**  
500 µg

## APPLICATION

### Application Note

\*Optimal dilutions/concentrations should be determined by the researcher.

Suggested dilution	Recommended dilution
WB	Assay dependent
IHC-Fr	Assay dependent
FACS	$\leq 1 \mu\text{g}/10^6\text{cells}$
ELISA	1:5000-1:10000

**Note : The suggested use of these reagents is in a final volume of 100µl.**

Not tested in other applications.

## PROPERTIES

<b>Form</b>	Liquid
<b>Buffer</b>	PBS
<b>Preservative</b>	0.09% sodium azide
<b>Storage</b>	Store as concentrated solution. Centrifuge briefly prior to opening vial. Store at 4°C.
<b>Concentration</b>	0.5 mg/ml (Please refer to the vial label for the specific concentration.)
<b>Immunogen</b>	Rat κ hybridoma
<b>Purification</b>	Purified IgG2a
<b>Conjugation</b>	Biotin

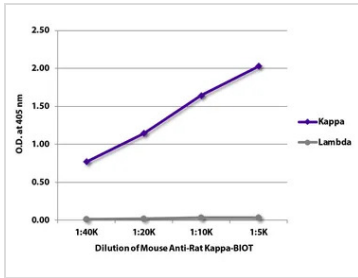
### Note

For laboratory research use only. Not for any clinical, therapeutic, or diagnostic use in humans or animals. Not for animal or human consumption.

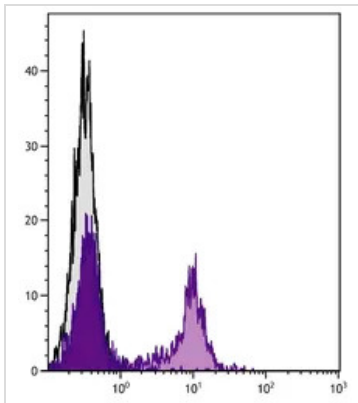
Purchasers shall not, and agree not to enable third parties to, analyze, copy, reverse engineer or otherwise attempt to determine the structure or sequence of the product.



For full product information, images and publications, please visit our [website](#).

**DATA IMAGES**

**GTX04145-02 ELISA Image**

ELISA analysis of purified rat immunoglobulins using serially diluted GTX04145-02 Mouse Anti-Rat kappa light chain antibody [K4F5] (Biotin) followed by Streptavidin (HRP).


**GTX04145-02 FACS Image**

FACS analysis of BALB/c mouse splenocytes using Rat Anti-Mouse CD22 antibody followed by GTX04145-02 Mouse Anti-Rat kappa light chain antibody [K4F5] (Biotin) and Streptavidin (FITC).



For full product information, images and publications, please visit our [website](https://www.genetex.com).