

# Rabbit Anti-Sheep IgG antibody, F(ab')<sub>2</sub> fragment, pre-adsorbed (HRP)

**Cat. No. GTX04156-01**

<b>Host</b>	Rabbit
<b>Clonality</b>	Polyclonal
<b>Isotype</b>	IgG F(ab') <sub>2</sub>
<b>Applications</b>	WB, IHC-P, IHC-Fr, FCM, ELISA
<b>Reactivity</b>	Sheep

**Package**  
1 ml

## Applications

### Application Note

\*Optimal dilutions/concentrations should be determined by the researcher.

Suggested dilution	Recommended dilution
WB	Assay dependent
IHC-P	Assay dependent
IHC-Fr	Assay dependent
FCM	Assay dependent
ELISA	1:4000-1:8000

Not tested in other applications.

### Product Note

Pre-adsorbed with None. May react with immunoglobulins from other species and the light chains of other sheep immunoglobulins.

## Properties

<b>Form</b>	Liquid
<b>Buffer</b>	PBS, 50% glycerol
<b>Preservative</b>	No preservatives
<b>Storage</b>	Store as concentrated solution. Centrifuge briefly prior to opening vial. Store at 4°C.
<b>Concentration</b>	Batch dependent (Please refer to the vial label for the specific concentration.)
<b>Immunogen</b>	Pepsin digest of Rabbit Anti-Sheep IgG(H+L).
<b>Purification</b>	Purified IgG
<b>Conjugation</b>	Horseradish peroxidase(HRP)



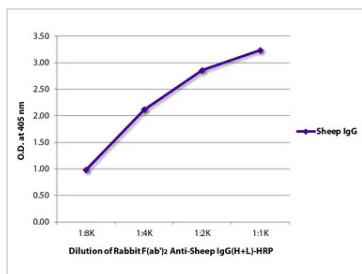
For full product information, images and publications, please visit our [website](#).

For laboratory research use only. Not for any clinical, therapeutic, or diagnostic use in humans or animals. Not for animal or human consumption.

## Note

Purchasers shall not, and agree not to enable third parties to, analyze, copy, reverse engineer or otherwise attempt to determine the structure or sequence of the product.

## DATA IMAGES



### GTx04156-01 ELISA Image

ELISA analysis of purified sheep IgG using GTx04156-01 Rabbit Anti-Sheep IgG antibody, F(ab')<sub>2</sub> fragment, pre-adsorbed (HRP).



For full product information, images and publications, please visit our [website](https://www.genetex.com).