

Rabbit Anti-Sheep IgG antibody, F(ab')₂ fragment, pre-adsorbed (AP)

Cat. No. GTX04156-03

Host	Rabbit
Clonality	Polyclonal
Isotype	IgG F(ab') ₂
Applications	IHC-P, IHC-Fr, FCM, ELISA
Reactivity	Sheep

Package
1 ml

Applications

Application Note

*Optimal dilutions/concentrations should be determined by the researcher.

Suggested dilution	Recommended dilution
IHC-P	Assay dependent
IHC-Fr	Assay dependent
FCM	Assay dependent
ELISA	1:2000-1:4000

Not tested in other applications.

Product Note

Pre-adsorbed with None. May react with immunoglobulins from other species and the light chains of other sheep immunoglobulins.

Properties

Form	Liquid
Buffer	50mM Tris, 1mM MgCl ₂ , 50% Glycerol
Preservative	0.09% sodium azide
Storage	Store as concentrated solution. Centrifuge briefly prior to opening vial. Store at 4°C.
Concentration	Batch dependent (Please refer to the vial label for the specific concentration.)
Immunogen	Pepsin digest of Rabbit Anti-Sheep IgG(H+L).
Purification	Purified IgG
Conjugation	Alkaline Phosphatase (AP)

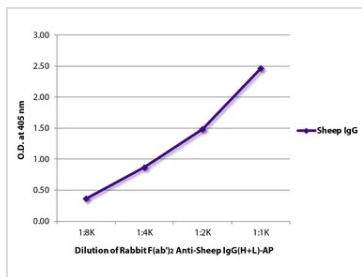
Note

For laboratory research use only. Not for any clinical, therapeutic, or diagnostic use in humans or animals. Not for animal or human consumption.

Purchasers shall not, and agree not to enable third parties to, analyze, copy, reverse engineer or otherwise attempt to determine the structure or sequence of the product.



For full product information, images and publications, please visit our [website](#).

DATA IMAGES

GTX04156-03 ELISA Image

ELISA analysis of purified sheep IgG using GTX04156-03 Rabbit Anti-Sheep IgG antibody, F(ab')₂ fragment, pre-adsorbed (AP).



For full product information, images and publications, please visit our [website](https://www.genetex.com).