

Rabbit Anti-Goat IgG antibody, F(ab')₂ fragment, pre-adsorbed (HRP)

Cat. No. GTX04158-01

Host	Rabbit
Clonality	Polyclonal
Isotype	IgG F(ab') ₂
Applications	WB, ICC/IF, IHC-Fr, ELISA
Reactivity	Goat

Package
1 ml

Applications

Application Note

*Optimal dilutions/concentrations should be determined by the researcher.

Suggested dilution	Recommended dilution
WB	Assay dependent
ICC/IF	Assay dependent
IHC-Fr	Assay dependent
ELISA	1:4000-1:8000

Not tested in other applications.

Product Note Pre-adsorbed with None. May react with immunoglobulins from other species and the light chains of other goat.

Properties

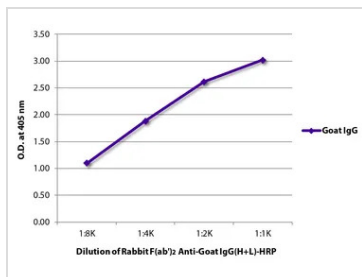
Form	Liquid
Buffer	PBS, 50% glycerol
Preservative	No preservatives
Storage	Store as concentrated solution. Centrifuge briefly prior to opening vial. Store at 4°C.
Concentration	Batch dependent (Please refer to the vial label for the specific concentration.)
Immunogen	Pepsin digest of Rabbit Anti-Goat IgG(H+L).
Purification	Purified IgG
Conjugation	Horseradish peroxidase(HRP)

Note For laboratory research use only. Not for any clinical, therapeutic, or diagnostic use in humans or animals. Not for animal or human consumption.

Purchasers shall not, and agree not to enable third parties to, analyze, copy, reverse engineer or otherwise attempt to determine the structure or sequence of the product.



For full product information, images and publications, please visit our [website](#).

DATA IMAGES

GTX04158-01 ELISA Image

ELISA analysis of purified goat IgG using GTX04158-01 Rabbit Anti-Goat IgG antibody, F(ab')₂ fragment, pre-adsorbed (HRP).



For full product information, images and publications, please visit our [website](https://www.genetex.com).