

Rabbit Anti-Goat IgG antibody, pre-adsorbed (Biotin)

Cat. No. GTX04169-02

Host	Rabbit
Clonality	Polyclonal
Isotype	IgG
Applications	WB, ICC/IF, IHC-P, IHC-Fr, FCM, ELISA
Reactivity	Goat

Package
1 mg

Applications

Application Note

*Optimal dilutions/concentrations should be determined by the researcher.

Suggested dilution	Recommended dilution
WB	Assay dependent
ICC/IF	Assay dependent
IHC-P	Assay dependent
IHC-Fr	Assay dependent
FCM	Assay dependent
ELISA	1:5000-1:20000

Not tested in other applications.

Product Note

Pre-adsorbed with Human serum proteins (SP). May react with immunoglobulins from other species and the light chains of other goat immunoglobulins.

Properties

Form	Liquid
Buffer	PBS
Preservative	0.09% sodium azide
Storage	Store as concentrated solution. Centrifuge briefly prior to opening vial. Store at 4°C.
Concentration	0.5 mg/ml (Please refer to the vial label for the specific concentration.)
Immunogen	Pooled antisera from rabbits hyperimmunized with goat IgG
Purification	Purified by antigen-affinity chromatography
Conjugation	Biotin

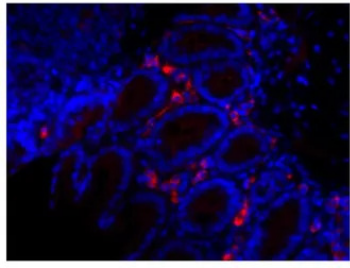


For full product information, images and publications, please visit our [website](#).

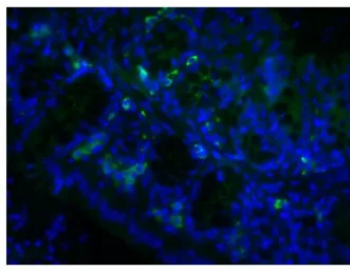
For laboratory research use only. Not for any clinical, therapeutic, or diagnostic use in humans or animals. Not for animal or human consumption.

Note

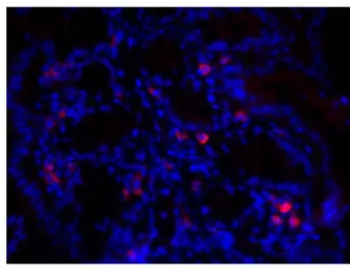
Purchasers shall not, and agree not to enable third parties to, analyze, copy, reverse engineer or otherwise attempt to determine the structure or sequence of the product.

DATA IMAGES

GTX04169-02 IHC-P Image

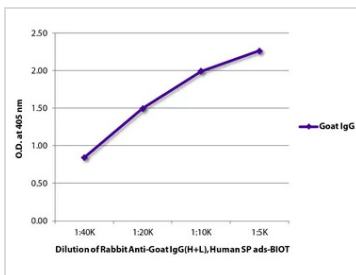
IHC-P analysis of mouse small intestine tissue using Goat Anti-Mouse IgA antibody followed by GTX04169-02 Rabbit Anti-Goat IgG antibody, pre-adsorbed (Biotin) and Streptavidin (CY3.5).


GTX04169-02 IHC-P Image

IHC-P analysis of mouse small intestine tissue using Goat Anti-Mouse IgA antibody followed by GTX04169-02 Rabbit Anti-Goat IgG antibody, pre-adsorbed (Biotin) and Streptavidin (FITC).


GTX04169-02 IHC-P Image

IHC-P analysis of mouse small intestine tissue using Goat Anti-Mouse IgA antibody followed by GTX04169-02 Rabbit Anti-Goat IgG antibody, pre-adsorbed (Biotin) and Streptavidin (CY3).


GTX04169-02 ELISA Image

ELISA analysis of purified goat IgG using GTX04169-02 Rabbit Anti-Goat IgG antibody, pre-adsorbed (Biotin) followed by Streptavidin (HRP).



For full product information, images and publications, please visit our [website](https://www.genetex.com).