

## Mouse Anti-Chicken IgM antibody [M-1] (R-PE-Cy5)

Cat. No. GTX04172-09

Host	Mouse
Clonality	Monoclonal
Isotype	IgG2b
Applications	ICC/IF, IHC-Fr, FCM, IP, ELISA, Activation
Reactivity	Chicken, Turkey

Package  
100 µg

## Applications

## Application Note

\*Optimal dilutions/concentrations should be determined by the researcher.

Suggested dilution	Recommended dilution
ICC/IF	Assay dependent
IHC-Fr	Assay dependent
FCM	$\leq 0.2 \mu\text{g}/10^6\text{cells}$
IP	Assay dependent
ELISA	Assay dependent
Activation	Assay dependent

**Note : The suggested use of these reagents is in a final volume of 100µl.**

Not tested in other applications.

**Product Note** Reacts with Chicken/Turkey IgM.

## Properties

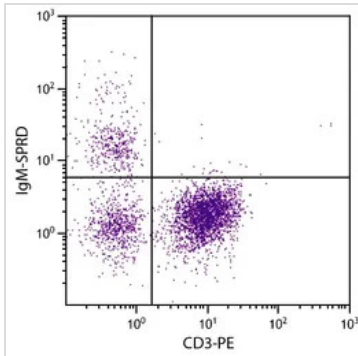
Form	Liquid
Buffer	PBS with a stabilizer
Preservative	0.09% sodium azide
Storage	Store as concentrated solution. Centrifuge briefly prior to opening vial. Store at 4°C. DO NOT FREEZE. Protect from light.
Concentration	0.1 mg/ml (Please refer to the vial label for the specific concentration.)
Immunogen	Affinity purified chicken Ig or isolated lymphocytes
Purification	Purified IgG2b
Conjugation	R-Phycoerythrin-Cyanine5 (R-PE-Cy5) <a href="#">Wavelength</a>

For full product information, images and publications, please visit our [website](#).

For laboratory research use only. Not for any clinical, therapeutic, or diagnostic use in humans or animals. Not for animal or human consumption.

**Note**

Purchasers shall not, and agree not to enable third parties to, analyze, copy, reverse engineer or otherwise attempt to determine the structure or sequence of the product.

**DATA IMAGES**

**GTX04172-09 FCM Image**

FACS analysis of chicken peripheral blood lymphocytes using Mouse Anti-Chicken CD3 antibody (PE) and GTX04172-09 Mouse Anti-Chicken IgM antibody [M-1] (R-PE-Cy5).



For full product information, images and publications, please visit our [website](#).