

# Mouse Anti-Chicken lambda light chain antibody [L-1] (PE)

**Cat. No. GTX04175-08**

<b>Host</b>	Mouse
<b>Clonality</b>	Monoclonal
<b>Isotype</b>	IgG1
<b>Applications</b>	WB, ICC/IF, IHC-Fr, FCM, IP
<b>Reactivity</b>	Chicken

**Package**  
100 µg

## Applications

### Application Note

\*Optimal dilutions/concentrations should be determined by the researcher.

Suggested dilution	Recommended dilution
WB	Assay dependent
ICC/IF	Assay dependent
IHC-Fr	Assay dependent
FCM	≤ 1 µg/10 <sup>6</sup> cells
IP	Assay dependent

**Note :** The suggested use of these reagents is in a final volume of 100µl.

Not tested in other applications.

## Properties

<b>Form</b>	Liquid
<b>Buffer</b>	PBS with a stabilizer
<b>Preservative</b>	0.09% sodium azide
<b>Storage</b>	Store as concentrated solution. Centrifuge briefly prior to opening vial. Store at 4°C. DO NOT FREEZE. Protect from light.
<b>Concentration</b>	0.1 mg/ml (Please refer to the vial label for the specific concentration.)
<b>Immunogen</b>	Affinity purified chicken Ig or isolated lymphocytes
<b>Purification</b>	Purified IgG1
<b>Conjugation</b>	Phycoerythrin (PE) <a href="#">Wavelength</a>

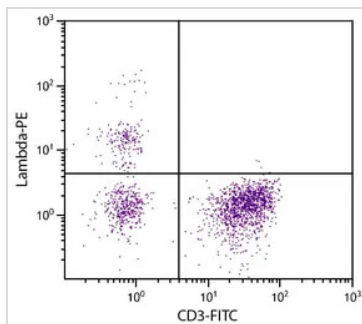
### Note

For laboratory research use only. Not for any clinical, therapeutic, or diagnostic use in humans or animals. Not for animal or human consumption.

Purchasers shall not, and agree not to enable third parties to, analyze, copy, reverse engineer or otherwise attempt to determine the structure or sequence of the product.



For full product information, images and publications, please visit our [website](#).

**DATA IMAGES**

**GTx04175-08 FCM Image**

FACS analysis of chicken peripheral blood lymphocytes using Mouse Anti-Chicken CD3 antibody (FITC) and GTx04175-08 Mouse Anti-Chicken lambda light chain antibody [L-1] (PE).



For full product information, images and publications, please visit our [website](https://www.genetex.com).