

Mouse Anti-Human IgG2 (Fc) antibody [HP6002] (FITC)

Cat. No. GTX04180-06

| | |
|---------------------|---|
| Host | Mouse |
| Clonality | Monoclonal |
| Isotype | IgG1 |
| Applications | WB, IHC-Fr, FCM, IP, ELISA, ELISPOT, Multiplexing, Purification |
| Reactivity | Human |

Package
500 µg

Applications

Application Note

*Optimal dilutions/concentrations should be determined by the researcher.

| Suggested dilution | Recommended dilution |
|--------------------|----------------------|
| WB | Assay dependent |
| IHC-Fr | Assay dependent |
| FCM | Assay dependent |
| IP | Assay dependent |
| ELISA | 1:200-1:400 |
| ELISPOT | Assay dependent |
| Multiplexing | Assay dependent |
| Purification | Assay dependent |

Not tested in other applications.

Properties

| | |
|----------------------|---|
| Form | Liquid |
| Buffer | PBS |
| Preservative | 0.09% sodium azide |
| Storage | Store as concentrated solution. Centrifuge briefly prior to opening vial. Store at 4°C. Protect from light. |
| Concentration | 0.5 mg/ml (Please refer to the vial label for the specific concentration.) |
| Immunogen | Human IgG2 myeloma protein |
| Purification | Purified IgG1 |
| Conjugation | Fluorescein isothiocyanate (FITC) Wavelength |

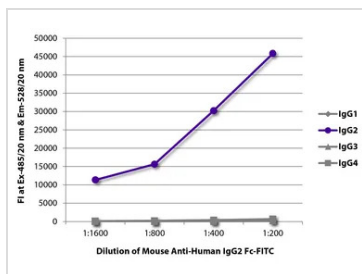


For full product information, images and publications, please visit our [website](#).

For laboratory research use only. Not for any clinical, therapeutic, or diagnostic use in humans or animals. Not for animal or human consumption.

Note

Purchasers shall not, and agree not to enable third parties to, analyze, copy, reverse engineer or otherwise attempt to determine the structure or sequence of the product.

DATA IMAGES

GTx04180-06 ELISA Image

ELISA analysis of purified human immunoglobulins using serially diluted GTx04180-06 Mouse Anti-Human IgG2 (Fc) antibody [HP6002] (FITC).



For full product information, images and publications, please visit our [website](https://www.genetex.com).