

Goat Anti-Mouse IgM (Mu chain) antibody, pre-adsorbed (Biotin)

Cat. No. GTX04192-02

Host	Goat
Clonality	Polyclonal
Isotype	IgG
Applications	WB, ICC/IF, IHC-P, IHC-Fr, FCM, IP, ELISA, Activation, EM, ELISPOT, Purification
Reactivity	Mouse

Package
1 mg

Applications

Application Note

*Optimal dilutions/concentrations should be determined by the researcher.

Suggested dilution	Recommended dilution
WB	Assay dependent
ICC/IF	Assay dependent
IHC-P	Assay dependent
IHC-Fr	Assay dependent
FCM	$\leq 1 \mu\text{g}/10^6\text{cells}$
IP	Assay dependent
ELISA	1:5000-1:20000
Activation	Assay dependent
EM	Assay dependent
ELISPOT	Assay dependent
Purification	Assay dependent

Note : The suggested use of these reagents is in a final volume of 100 μl .

Not tested in other applications.

Product Note

Pre-adsorbed with Mouse IgG and IgA; human immunoglobulins and pooled sera. May react with immunoglobulins from other species.

Properties

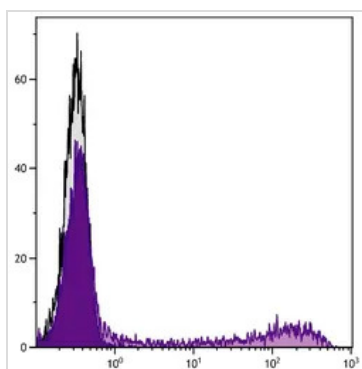
Form	Liquid
Buffer	PBS
Preservative	0.09% sodium azide
Storage	Store as concentrated solution. Centrifuge briefly prior to opening vial. Store at 4°C.



For full product information, images and publications, please visit our [website](#).

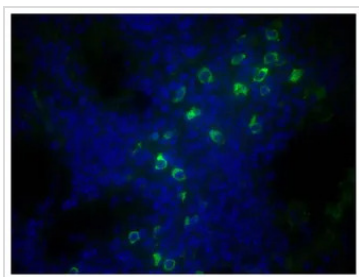
Concentration	0.5 mg/ml (Please refer to the vial label for the specific concentration.)
Immunogen	Pooled antisera from goats hyperimmunized with mouse IgM
Purification	Purified by antigen-affinity chromatography
Conjugation	Biotin
Note	For laboratory research use only. Not for any clinical, therapeutic, or diagnostic use in humans or animals. Not for animal or human consumption. Purchasers shall not, and agree not to enable third parties to, analyze, copy, reverse engineer or otherwise attempt to determine the structure or sequence of the product.

DATA IMAGES



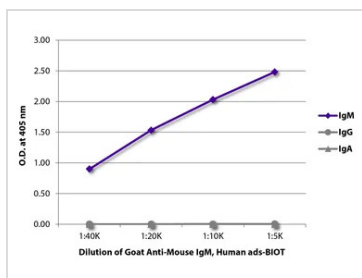
GTX04192-02 FCM Image

FACS analysis of human peripheral blood lymphocytes using Mouse Anti-Human CD57 antibody followed by GTX04192-02 Goat Anti-Mouse IgM (Mu chain) antibody, pre-adsorbed (Biotin) and Streptavidin (FITC).



GTX04192-02 IHC-P Image

IHC-P analysis of mouse lymph node tissue using GTX04192-02 Goat Anti-Mouse IgM (Mu chain) antibody, pre-adsorbed (Biotin) followed by Streptavidin (FITC).



GTX04192-02 ELISA Image

ELISA analysis of purified mouse immunoglobulins using serially diluted GTX04192-02 Goat Anti-Mouse IgM (Mu chain) antibody, pre-adsorbed (Biotin) followed by Streptavidin (HRP).



For full product information, images and publications, please visit our [website](https://www.genetex.com).