

Goat Anti-Mouse IgM (Mu chain) antibody, pre-adsorbed (FITC)

Cat. No. GTX04192-06

Host	Goat
Clonality	Polyclonal
Isotype	IgG
Applications	WB, ICC/IF, IHC-P, IHC-Fr, FCM, IP, ELISA, Activation, EM, ELISPOT, Purification
Reactivity	Mouse

Package
1 mg

Applications

Application Note

*Optimal dilutions/concentrations should be determined by the researcher.

Suggested dilution	Recommended dilution
WB	Assay dependent
ICC/IF	Assay dependent
IHC-P	Assay dependent
IHC-Fr	Assay dependent
FCM	$\leq 1 \mu\text{g}/10^6\text{cells}$
IP	Assay dependent
ELISA	1:100-1:400
Activation	Assay dependent
EM	Assay dependent
ELISPOT	Assay dependent
Purification	Assay dependent

Note : The suggested use of these reagents is in a final volume of 100 μl .

Not tested in other applications.

Product Note

Pre-adsorbed with Mouse IgG and IgA; human immunoglobulins and pooled sera. May react with immunoglobulins from other species.

Properties

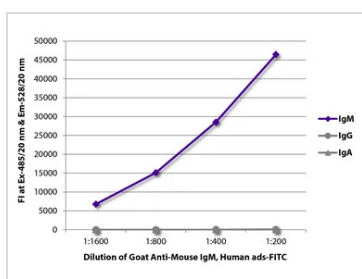
Form	Liquid
Buffer	PBS
Preservative	0.09% sodium azide
Storage	Store as concentrated solution. Centrifuge briefly prior to opening vial. Store at 4°C. Protect from light.



For full product information, images and publications, please visit our [website](#).

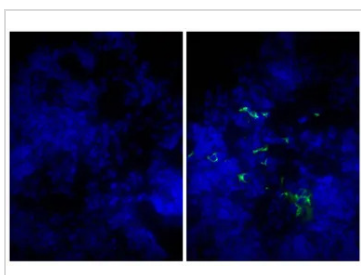
Concentration	1 mg/ml (Please refer to the vial label for the specific concentration.)
Immunogen	Pooled antisera from goats hyperimmunized with mouse IgM
Purification	Purified by antigen-affinity chromatography
Conjugation	Fluorescein isothiocyanate (FITC) Wavelength
Note	<p>For laboratory research use only. Not for any clinical, therapeutic, or diagnostic use in humans or animals. Not for animal or human consumption.</p> <p>Purchasers shall not, and agree not to enable third parties to, analyze, copy, reverse engineer or otherwise attempt to determine the structure or sequence of the product.</p>

DATA IMAGES



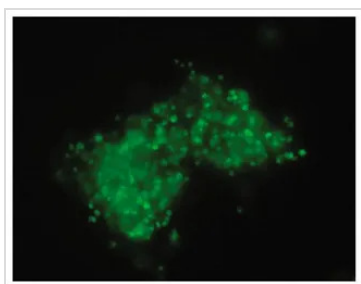
GTx04192-06 ELISA Image

ELISA analysis of purified mouse immunoglobulins using serially diluted GTx04192-06 Goat Anti-Mouse IgM (Mu chain) antibody, pre-adsorbed (FITC).



GTx04192-06 IHC-Fr Image

IHC-Fr analysis of mouse lymph node using GTx04192-06 Goat Anti-Mouse IgM (Mu chain) antibody, pre-adsorbed (FITC).



GTx04192-06 ICC/IF Image

ICC/IF analysis of Wdpks1Δ-1 yeast cells treated with enzymes, denaturant, and hot acid using melanin antibody followed by GTx04192-06 Goat Anti-Mouse IgM (Mu chain) antibody, pre-adsorbed (FITC).



For full product information, images and publications, please visit our [website](#).